

Product Name: Cytokeratin 1 (1G12) Rabbit Monoclonal Antibody
Catalog #: AMRe09717

Summary

Production Name	Cytokeratin 1 (1G12) Rabbit Monoclonal Antibody
Description	Rabbit Monoclonal Antibody
Host	Rabbit
Application	WB
Reactivity	Human,Mouse,Rat

Performance

Conjugation	Unconjugated
Modification	Unmodified
Isotype	IgG
Clonality	Monoclonal
Form	Liquid
Storage	Store at 4°C short term. Aliquot and store at -20°C long term. Avoid freeze/thaw cycles.
Buffer	Rabbit IgG in phosphate buffered saline , pH 7.4, 150mM NaCl, 0.02% New type preservative N and 50% glycerol. Store at +4°C short term. Store at -20°C long term. Avoid freeze / thaw cycle.
Purification	Affinity purification

Immunogen

Gene Name	KRT1
Alternative Names	67 kDa cytokeratin; CK1; EHK; Epidermolytic hyperkeratosis 1; EPPK; Hair alpha protein; K1; Keratin; KRT 1; KRT1A; NEPPK; type II cytoskeletal 1; Type-II keratin Kb1;
Gene ID	3848.0
SwissProt ID	P04264.

Application

Dilution Ratio	WB 1:5000-1:20000
Molecular Weight	66kDa

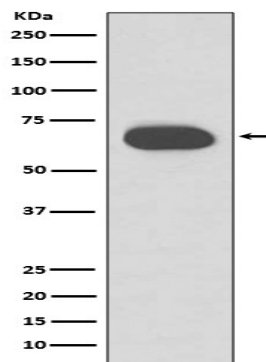
Product Name: Cytokeratin 1 (1G12) Rabbit Monoclonal Antibody
Catalog #: AMRe09717

Background

May regulate the activity of kinases such as PKC and SRC via binding to integrin beta-1 (ITB1) and the receptor of activated protein C kinase 1 (RACK1). May regulate the activity of kinases such as PKC and SRC via binding to integrin beta-1 (ITB1) and the receptor of activated protein C kinase 1 (RACK1). In complex with C1QBP is a high affinity receptor for kininogen-1/HMWK.

Research Area

Image Data



Western blot analysis of Cytokeratin 1 expression in Human skin lysate.

Note

For research use only.