

**Product Name: Cytochrome P450 Reductase (4D2)  
Rabbit Monoclonal Antibody  
Catalog #: AMRe09715**

---

## Summary

<b>Production Name</b>	Cytochrome P450 Reductase (4D2) Rabbit Monoclonal Antibody
<b>Description</b>	Rabbit Monoclonal Antibody
<b>Host</b>	Rabbit
<b>Application</b>	WB
<b>Reactivity</b>	Human,Mouse,Rat

## Performance

<b>Conjugation</b>	Unconjugated
<b>Modification</b>	Unmodified
<b>Isotype</b>	IgG
<b>Clonality</b>	Monoclonal
<b>Form</b>	Liquid
<b>Storage</b>	Store at 4°C short term. Aliquot and store at -20°C long term. Avoid freeze/thaw cycles.
<b>Buffer</b>	Supplied in 50mM Tris-Glycine(pH 7.4), 0.15M NaCl, 40%Glycerol, 0.01% New type preservative N and 0.05% BSA.
<b>Purification</b>	Affinity purification

## Immunogen

<b>Gene Name</b>	POR {ECO:0000255 HAMAP-Rule:MF_03212}
<b>Alternative Names</b>	CPR; CYPOR; P450R; por;
<b>Gene ID</b>	5447.0
<b>SwissProt ID</b>	P16435.A synthetic peptide of human Cytochrome P450 Reductase

## Application

<b>Dilution Ratio</b>	WB: 1:2000-1:10000
<b>Molecular Weight</b>	77kDa

## Background

---

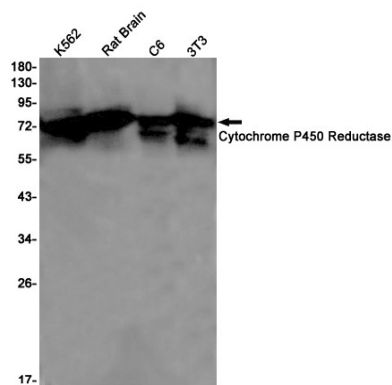
**Product Name: Cytochrome P450 Reductase (4D2)  
Rabbit Monoclonal Antibody  
Catalog #: AMRe09715**

---

This enzyme is required for electron transfer from NADP to cytochrome P450 in microsomes. It can also provide electron transfer to heme oxygenase and cytochrome B5. This enzyme is required for electron transfer from NADP to cytochrome P450 in microsomes. It can also provide electron transfer to heme oxygenase and cytochrome B5.

## Research Area

## Image Data



Western blot detection of Cytochrome P450 Reductase in K562,Rat Brain,C6,3T3 cell lysates using Cytochrome P450 Reductase antibody(1:1000 diluted).

## Note

For research use only.