

Product Name: Cyclin E1 (4X19) Rabbit Monoclonal Antibody
Catalog #: AMRe09594



Summary

Production Name	Cyclin E1 (4X19) Rabbit Monoclonal Antibody
Description	Rabbit Monoclonal Antibody
Host	Rabbit
Application	WB
Reactivity	Human

Performance

Conjugation	Unconjugated
Modification	Unmodified
Isotype	IgG
Clonality	Monoclonal
Form	Liquid
Storage	Store at 4°C short term. Aliquot and store at -20°C long term. Avoid freeze/thaw cycles.
Buffer	Rabbit IgG in phosphate buffered saline , pH 7.4, 150mM NaCl, 0.02% New type preservative N and 50% glycerol. Store at +4°C short term. Store at -20°C long term. Avoid freeze / thaw cycle.
Purification	Affinity purification

Immunogen

Gene Name	CCNE1
Alternative Names	CCNE; CCNE1; cyclin E1; cyclin Es; cyclin Et; G1/S-specific cyclin-E1
Gene ID	898.0
SwissProt ID	P24864.

Application

Dilution Ratio	WB 1:500-1:2000
Molecular Weight	47kDa

Product Name: Cyclin E1 (4X19) Rabbit Monoclonal Antibody
Catalog #: AMRe09594

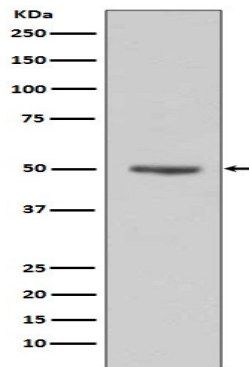


Background

Essential for the control of the cell cycle at the G1/S (start) transition. a member of the highly conserved cyclin family, whose members are characterized by a dramatic periodicity in protein abundance through the cell cycle. Cyclins function as regulators of CDK kinases. Essential for the control of the cell cycle at the G1/S (start) transition.

Research Area

Image Data



Western blot analysis of Cyclin E1 expression in HeLa cell lysates.

Note

For research use only.