

Product Name: Cyclin E1 (19C1) Rabbit Monoclonal Antibody
Catalog #: AMRe09593



Summary

Production Name	Cyclin E1 (19C1) Rabbit Monoclonal Antibody
Description	Rabbit Monoclonal Antibody
Host	Rabbit
Application	WB
Reactivity	Human

Performance

Conjugation	Unconjugated
Modification	Unmodified
Isotype	IgG
Clonality	Monoclonal
Form	Liquid
Storage	Store at 4°C short term. Aliquot and store at -20°C long term. Avoid freeze/thaw cycles.
Buffer	Supplied in 50mM Tris-Glycine(pH 7.4), 0.15M NaCl, 40%Glycerol, 0.01% New type preservative N and 0.05% BSA.
Purification	Affinity purification

Immunogen

Gene Name	CCNE1
Alternative Names	CCNE; Ccne1; cyclin E variant ex5del; cyclin E variant ex7del; Cyclin E1; Cyclin Es; Cyclin Et; G1/S specific cyclin E; G1/S-specific cyclin-E1;
Gene ID	898.0
SwissProt ID	P24864.A synthetic peptide of human Cyclin E1

Application

Dilution Ratio	WB: 1:1000-1:5000
Molecular Weight	47kDa

Product Name: Cyclin E1 (19C1) Rabbit Monoclonal Antibody
Catalog #: AMRe09593

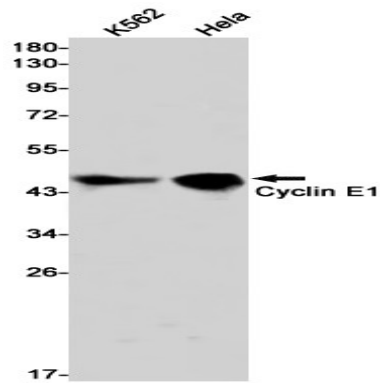


Background

Cyclin E1 and cyclin E2 can associate with and activate CDK2. Upon DNA damage, upregulation/activation of the CDK inhibitors p21 Waf1/Cip1 and p27 Kip1 prevent cyclin E/CDK2 activation, resulting in G1/S arrest. Cyclin E1 is phosphorylated at multiple sites in vivo including Thr62, Ser88, Ser72, Thr380 and Ser384, and is controlled by at least two kinases, CDK2 and GSK-3. Essential for the control of the cell cycle at the G1/S (start) transition.

Research Area

Image Data



Western blot detection of Cyclin E1 in K562, HeLa cell lysates using Cyclin E1 antibody (1:1000 diluted).

Note

For research use only.