

Product Name: Cyclin B2 (18U13) Rabbit Monoclonal Antibody
Catalog #: AMRe09586



Summary

Production Name	Cyclin B2 (18U13) Rabbit Monoclonal Antibody
Description	Rabbit Monoclonal Antibody
Host	Rabbit
Application	WB
Reactivity	Human,Mouse,Rat

Performance

Conjugation	Unconjugated
Modification	Unmodified
Isotype	IgG
Clonality	Monoclonal
Form	Liquid
Storage	Store at 4°C short term. Aliquot and store at -20°C long term. Avoid freeze/thaw cycles.
Buffer	Supplied in 50mM Tris-Glycine(pH 7.4), 0.15M NaCl, 40%Glycerol, 0.01% New type preservative N and 0.05% BSA.
Purification	Affinity purification

Immunogen

Gene Name	CCNB2
Alternative Names	ccnb2; CycB2; Cyclin B2; G2/mitotic specific cyclin B2;
Gene ID	9133.0
SwissProt ID	O95067.Recombinant protein of human Cyclin B2/CCNB2

Application

Dilution Ratio	WB: 1:1000
Molecular Weight	45kDa

Background

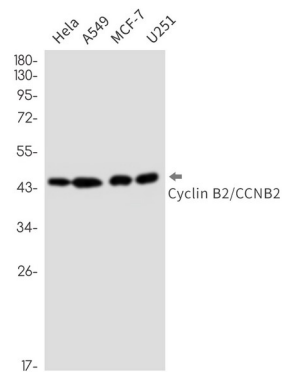
Product Name: Cyclin B2 (18U13) Rabbit Monoclonal Antibody
Catalog #: AMRe09586



Cyclin B2 is a member of the cyclin family, specifically the B-type cyclins. The B-type cyclins, B1 and B2, associate with p34cdc2 and are essential components of the cell cycle regulatory machinery. Essential for the control of the cell cycle at the G2/M (mitosis) transition. Essential for the control of the cell cycle at the G2/M (mitosis) transition.

Research Area

Image Data



Western blot detection of Cyclin B2/CCNB2 in HeLa,A549,MCF-7,U251 cell lysates using Cyclin B2/CCNB2 antibody(1:1000 diluted).

Note

For research use only.