

Product Name: CSDE1 (16X6) Rabbit Monoclonal Antibody
Catalog #: AMRe09447

Summary

Production Name	CSDE1 (16X6) Rabbit Monoclonal Antibody
Description	Rabbit Monoclonal Antibody
Host	Rabbit
Application	WB
Reactivity	Human,Mouse,Rat

Performance

Conjugation	Unconjugated
Modification	Unmodified
Isotype	IgG
Clonality	Monoclonal
Form	Liquid
Storage	Store at 4°C short term. Aliquot and store at -20°C long term. Avoid freeze/thaw cycles.
Buffer	Supplied in 50mM Tris-Glycine(pH 7.4), 0.15M NaCl, 40%Glycerol, 0.01% New type preservative N and 0.05% BSA.
Purification	Affinity purification

Immunogen

Gene Name	CSDE1
Alternative Names	Csde1; NRU; UNR;
Gene ID	7812.0
SwissProt ID	O75534.A synthetic peptide of human CSDE1/NRU

Application

Dilution Ratio	WB: 1:1000
Molecular Weight	89kDa

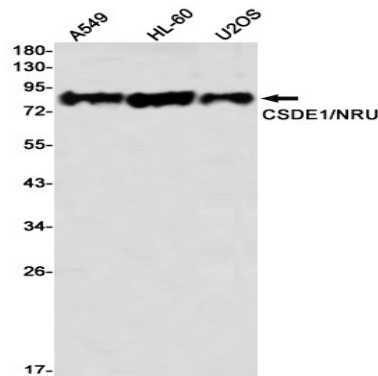
Background

Product Name: CSDE1 (16X6) Rabbit Monoclonal Antibody
Catalog #: AMRe09447

RNA-binding protein. Required for internal initiation of translation of human rhinovirus RNA. May be involved in translationally coupled mRNA turnover. RNA-binding protein involved in translationally coupled mRNA turnover (PubMed:11051545, PubMed:15314026). Implicated with other RNA-binding proteins in the cytoplasmic deadenylation/translational and decay interplay of the FOS mRNA mediated by the major coding-region determinant of instability (mCRD) domain (PubMed:11051545, PubMed:15314026). Required for efficient formation of stress granules (PubMed:29395067).

Research Area

Image Data



Western blot detection of CSDE1/NRU in A549,HL-60,U2OS using CSDE1/NRU antibody(1:1000 diluted)

Note

For research use only.