

Product Name: CRMP2 (8S4) Rabbit Monoclonal Antibody
Catalog #: AMRe09412

Summary

Production Name	CRMP2 (8S4) Rabbit Monoclonal Antibody
Description	Rabbit Monoclonal Antibody
Host	Rabbit
Application	WB,ELISA
Reactivity	Human,Mouse,Rat

Performance

Conjugation	Unconjugated
Modification	Unmodified
Isotype	IgG
Clonality	Monoclonal
Form	Liquid
Storage	Store at 4°C short term. Aliquot and store at -20°C long term. Avoid freeze/thaw cycles.
Buffer	Rabbit IgG in phosphate buffered saline , pH 7.4, 150mM NaCl, 0.02% New type preservative N and 50% glycerol. Store at +4°C short term. Store at -20°C long term. Avoid freeze / thaw cycle.
Purification	Affinity purification

Immunogen

Gene Name	DPYSL2
Alternative Names	DRP2; CRMP-2; N2A3; Unc-33-like phosphoprotein 2; ULIP-2; DPYSL2; CRMP2; ULIP2; Musunc33; TOAD64;
Gene ID	1808.0
SwissProt ID	Q16555.

Application

Dilution Ratio	WB 1:1000-1:5000
Molecular Weight	62kDa

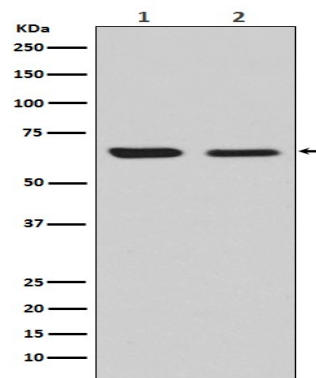
Product Name: CRMP2 (8S4) Rabbit Monoclonal Antibody
Catalog #: AMRe09412

Background

Necessary for signaling by class 3 semaphorins and subsequent remodeling of the cytoskeleton. Plays a role in axon guidance, neuronal growth cone collapse and cell migration. Plays a role in neuronal development and polarity, as well as in axon growth and guidance, neuronal growth cone collapse and cell migration. Necessary for signaling by class 3 semaphorins and subsequent remodeling of the cytoskeleton. May play a role in endocytosis.

Research Area

Image Data



Western blot analysis of CRMP2 expression in (1) U87-MG cell lysate; (2) NIH/3T3 cell lysate.

Note

For research use only.