

**Product Name: CRALBP (10D9) Rabbit Monoclonal Antibody**  
**Catalog #: AMRe09364**



## Summary

<b>Production Name</b>	CRALBP (10D9) Rabbit Monoclonal Antibody
<b>Description</b>	Rabbit Monoclonal Antibody
<b>Host</b>	Rabbit
<b>Application</b>	WB,ELISA
<b>Reactivity</b>	Mouse,Rat

## Performance

<b>Conjugation</b>	Unconjugated
<b>Modification</b>	Unmodified
<b>Isotype</b>	IgG
<b>Clonality</b>	Monoclonal
<b>Form</b>	Liquid
<b>Storage</b>	Store at 4°C short term. Aliquot and store at -20°C long term. Avoid freeze/thaw cycles.
<b>Buffer</b>	Rabbit IgG in phosphate buffered saline , pH 7.4, 150mM NaCl, 0.02% New type preservative N and 50% glycerol. Store at +4°C short term. Store at -20°C long term. Avoid freeze / thaw cycle.
<b>Purification</b>	Affinity purification

## Immunogen

<b>Gene Name</b>	
<b>Alternative Names</b>	RLBP1;
<b>Gene ID</b>	
<b>SwissProt ID</b>	Q9Z275(mouse)(human:P12271).

## Application

<b>Dilution Ratio</b>	WB 1:500-1:2000
<b>Molecular Weight</b>	36kDa

**Product Name: CRALBP (10D9) Rabbit Monoclonal Antibody**  
**Catalog #: AMRe09364**



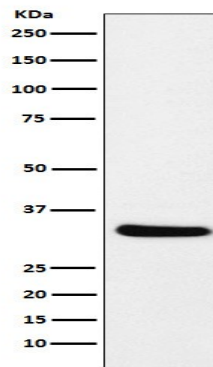
---

## Background

Participates in the regeneration of active 11-cis-retinol and 11-cis-retinaldehyde, from the inactive 11-trans products of the rhodopsin photocycle and in the de novo synthesis of these retinoids from 11-trans metabolic precursors.

## Research Area

## Image Data



Western blot analysis of CRALBP expression in mouse eyeball lysate.

## Note

For research use only.