

**Product Name: Clathrin heavy chain (18K9) Rabbit
Monoclonal Antibody
Catalog #: AMRe08889**



Summary

Production Name	Clathrin heavy chain (18K9) Rabbit Monoclonal Antibody
Description	Rabbit Monoclonal Antibody
Host	Rabbit
Application	WB
Reactivity	Human,Mouse,Rat

Performance

Conjugation	Unconjugated
Modification	Unmodified
Isotype	IgG
Clonality	Monoclonal
Form	Liquid
Storage	Store at 4°C short term. Aliquot and store at -20°C long term. Avoid freeze/thaw cycles.
Buffer	Supplied in 50mM Tris-Glycine(pH 7.4), 0.15M NaCl, 40%Glycerol, 0.01% New type preservative N and 0.05% BSA.
Purification	Affinity purification

Immunogen

Gene Name	
Alternative Names	CHC17; Clathrin heavy chain; Clathrin heavy chain like 1; CLH17; CLH22; CLTC; CLTCL; CLTD;
Gene ID	
SwissProt ID	Q00610/P53675.A synthetic peptide of human Clathrin heavy chain

Application

Dilution Ratio	WB: 1:2000-1:10000
Molecular Weight	192kDa

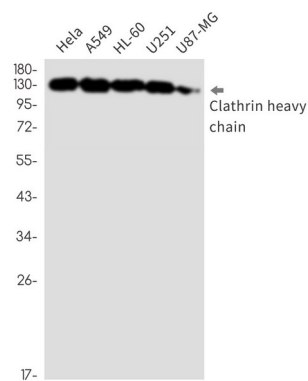
Product Name: Clathrin heavy chain (18K9) Rabbit Monoclonal Antibody
Catalog #: AMRe08889

Background

Clathrin heavy chain proteins are composed of several functional domains, including a carboxy-terminal region that permits interaction with other heavy chain proteins within a triskelion, and a globular amino-terminal region that associates with other vesicle proteins. Adaptor proteins, such as AP2, epsin and EPS15, are responsible for the recruitment of vesicle proteins to sites of pit formation and the assembly of the clathrin-coated vesicle.

Research Area

Image Data



Western blot detection of Clathrin heavy chain in HeLa,A549,HL-60,U251,U87-MG cell lysates using Clathrin heavy chain antibody(1:1000 diluted).

Note

For research use only.