

Product Name: CENPC (9Q1) Rabbit Monoclonal Antibody
Catalog #: AMRe08637

Summary

Production Name	CENPC (9Q1) Rabbit Monoclonal Antibody
Description	Rabbit Monoclonal Antibody
Host	Rabbit
Application	WB,ELISA
Reactivity	Human,Mouse,Rat

Performance

Conjugation	Unconjugated
Modification	Unmodified
Isotype	IgG
Clonality	Monoclonal
Form	Liquid
Storage	Store at 4°C short term. Aliquot and store at -20°C long term. Avoid freeze/thaw cycles.
Buffer	Rabbit IgG in phosphate buffered saline , pH 7.4, 150mM NaCl, 0.02% New type preservative N and 50% glycerol. Store at +4°C short term. Store at -20°C long term. Avoid freeze / thaw cycle.
Purification	Affinity purification

Immunogen

Gene Name	CENPC
Alternative Names	CENP-C; CENPC1; hcp-4; ICEN7; MIF2;
Gene ID	1060.0
SwissProt ID	Q03188.

Application

Dilution Ratio	WB 1:500-1:2000
Molecular Weight	107kDa

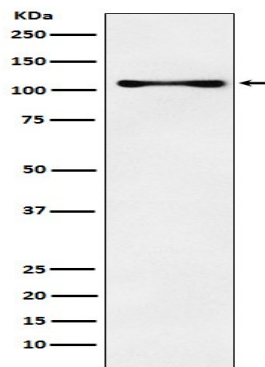
Product Name: CENPC (9Q1) Rabbit Monoclonal Antibody
Catalog #: AMRe08637

Background

Component of the CENPA-NAC (nucleosome-associated) complex, a complex that plays a central role in assembly of kinetochore proteins, mitotic progression and chromosome segregation. Component of the CENPA-NAC (nucleosome-associated) complex, a complex that plays a central role in assembly of kinetochore proteins, mitotic progression and chromosome segregation. The CENPA-NAC complex recruits the CENPA-CAD (nucleosome distal) complex and may be involved in incorporation of newly synthesized CENPA into centromeres. CENPC recruits DNA methylation and DNMT3B to both centromeric and pericentromeric satellite repeats and regulates the histone code in these regions.

Research Area

Image Data



Western blot analysis of CENPC expression in K562 cell lysate.

Note

For research use only.