

## Summary

<b>Production Name</b>	CDT1 (3N6) Rabbit Monoclonal Antibody
<b>Description</b>	Rabbit Monoclonal Antibody
<b>Host</b>	Rabbit
<b>Application</b>	WB,ELISA
<b>Reactivity</b>	Human

## Performance

<b>Conjugation</b>	Unconjugated
<b>Modification</b>	Unmodified
<b>Isotype</b>	IgG
<b>Clonality</b>	Monoclonal
<b>Form</b>	Liquid
<b>Storage</b>	Store at 4°C short term. Aliquot and store at -20°C long term. Avoid freeze/thaw cycles.
<b>Buffer</b>	Rabbit IgG in phosphate buffered saline , pH 7.4, 150mM NaCl, 0.02% New type preservative N and 50% glycerol. Store at +4°C short term. Store at -20°C long term. Avoid freeze / thaw cycle.
<b>Purification</b>	Affinity purification

## Immunogen

<b>Gene Name</b>	CDT1 {ECO:0000312 EMBL:AAG45181.1}
<b>Alternative Names</b>	CDT 1; Chromatin licensing and DNA replication factor 1; Retroviral integration site 2; RIS2;
<b>Gene ID</b>	81620.0
<b>SwissProt ID</b>	Q9H211.

## Application

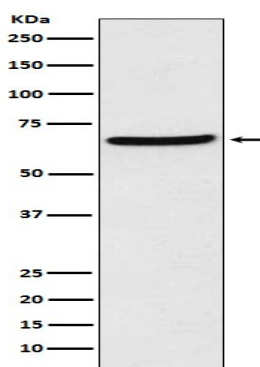
<b>Dilution Ratio</b>	WB 1:500-1:1000
<b>Molecular Weight</b>	60kDa

## Background

Cooperates with CDC6 to promote the loading of the mini-chromosome maintenance complex onto chromatin to form the pre-replication complex necessary to initiate DNA replication. Binds DNA in a sequence-, strand-, and conformation-independent manner. Potential oncogene. Required for both DNA replication and mitosis (PubMed:<a href="http://www.uniprot.org/citations/11125146" target="\_blank">11125146</a>, PubMed:<a href="http://www.uniprot.org/citations/22581055" target="\_blank">22581055</a>, PubMed:<a href="http://www.uniprot.org/citations/21856198" target="\_blank">21856198</a>, PubMed:<a href="http://www.uniprot.org/citations/14993212" target="\_blank">14993212</a>, PubMed:<a href="http://www.uniprot.org/citations/26842564" target="\_blank">26842564</a>). DNA replication licensing factor, required for pre- replication complex assembly. Cooperates with CDC6 and the origin recognition complex (ORC) during G1 phase of the cell cycle to promote the loading of the mini-chromosome maintenance (MCM) complex onto DNA to generate pre-replication complexes (pre-RC)(PubMed:<a href="http://www.uniprot.org/citations/14672932" target="\_blank">14672932</a>). Required also for mitosis by promoting stable kinetochore-microtubule attachments (PubMed:<a href="http://www.uniprot.org/citations/22581055" target="\_blank">22581055</a>). Potential oncogene (By similarity).

## Research Area

## Image Data



Western blot analysis of CDT1 expression in HEK293 cell lysate.

## Note

For research use only.