

**Product Name: Cdc16/APC6 (16I13) Rabbit Monoclonal Antibody**  
**Catalog #: AMRe08499**



## Summary

<b>Production Name</b>	Cdc16/APC6 (16I13) Rabbit Monoclonal Antibody
<b>Description</b>	Rabbit Monoclonal Antibody
<b>Host</b>	Rabbit
<b>Application</b>	WB
<b>Reactivity</b>	Human,Mouse,Rat

## Performance

<b>Conjugation</b>	Unconjugated
<b>Modification</b>	Unmodified
<b>Isotype</b>	IgG
<b>Clonality</b>	Monoclonal
<b>Form</b>	Liquid
<b>Storage</b>	Store at 4°C short term. Aliquot and store at -20°C long term. Avoid freeze/thaw cycles.
<b>Buffer</b>	Rabbit IgG in phosphate buffered saline , pH 7.4, 150mM NaCl, 0.02% New type preservative N and 50% glycerol. Store at +4°C short term. Store at -20°C long term. Avoid freeze / thaw cycle.
<b>Purification</b>	Affinity purification

## Immunogen

<b>Gene Name</b>	CDC16
<b>Alternative Names</b>	CDC16; ANAPC6; APC6; CDC16 homolog; Cyclosome subunit 6; CDC16Hs; CUT9;
<b>Gene ID</b>	8881.0
<b>SwissProt ID</b>	Q13042.

## Application

<b>Dilution Ratio</b>	WB 1:500-1:2000
<b>Molecular Weight</b>	72kDa

**Product Name: Cdc16/APC6 (16I13) Rabbit Monoclonal Antibody**  
**Catalog #: AMRe08499**



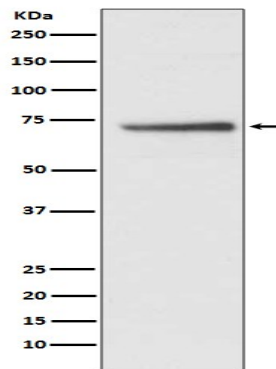
---

## Background

Component of the anaphase promoting complex/cyclosome (APC/C), a cell cycle-regulated E3 ubiquitin ligase that controls progression through mitosis and the G1 phase of the cell cycle. Component of the anaphase promoting complex/cyclosome (APC/C), a cell cycle-regulated E3 ubiquitin ligase that controls progression through mitosis and the G1 phase of the cell cycle. The APC/C complex acts by mediating ubiquitination and subsequent degradation of target proteins: it mainly mediates the formation of 'Lys-11'-linked polyubiquitin chains and, to a lower extent, the formation of 'Lys-48'- and 'Lys-63'-linked polyubiquitin chains.

## Research Area

## Image Data



Western blot analysis of Cdc16/APC6 expression in HepG2 cell lysate.

## Note

For research use only.