

**Product Name: CD46 (12M15) Rabbit Monoclonal Antibody**  
**Catalog #: AMRe08405**

---

## Summary

|                        |   |
|------------------------|---|
| <b>Production Name</b> | CD46 (12M15) Rabbit Monoclonal Antibody |
| <b>Description</b>     | Rabbit Monoclonal Antibody              |
| <b>Host</b>            | Rabbit                                  |
| <b>Application</b>     | WB,ELISA                                |
| <b>Reactivity</b>      | Human                                   |

## Performance

|                     |  |
|---------------------|--|
| <b>Conjugation</b>  | Unconjugated   |
| <b>Modification</b> | Unmodified   |
| <b>Isotype</b>      | IgG  |
| <b>Clonality</b>    | Monoclonal   |
| <b>Form</b>         | Liquid   |
| <b>Storage</b>      | Store at 4°C short term. Aliquot and store at -20°C long term. Avoid freeze/thaw cycles.   |
| <b>Buffer</b>       | Rabbit IgG in phosphate buffered saline , pH 7.4, 150mM NaCl, 0.02% New type preservative N and 50% glycerol. Store at +4°C short term. Store at -20°C long term. Avoid freeze / thaw cycle. |
| <b>Purification</b> | Affinity purification  |

## Immunogen

|                          |                                 |
|--------------------------|---------------------------------|
| <b>Gene Name</b>         | CD46                            |
| <b>Alternative Names</b> | MCP; MIC10; TLX; TRA2.10; CD46; |
| <b>Gene ID</b>           | 4179.0                          |
| <b>SwissProt ID</b>      | P15529.                         |

## Application

|                         |                 |
|-------------------------|-----------------|
| <b>Dilution Ratio</b>   | WB 1:500-1:2000 |
| <b>Molecular Weight</b> | 44kDa           |

**Product Name: CD46 (12M15) Rabbit Monoclonal Antibody**  
**Catalog #: AMRe08405**



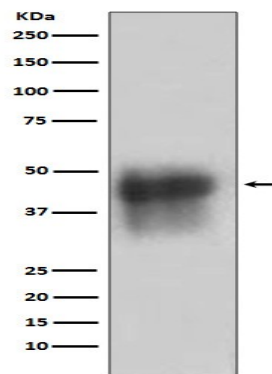
---

## Background

CD46 is a type I membrane protein and a regulatory part of the complement system. This protein has cofactor activity for inactivation of complement components C3b and C4b by serum factor I, which protects the host cell from damage by complement. In addition, CD46 can act as a receptor for the Edmonston strain of measles virus, human herpesvirus-6, and type IV pili of pathogenic *Neisseria*. Acts as a cofactor for complement factor I, a serine protease which protects autologous cells against complement-mediated injury by cleaving C3b and C4b deposited on host tissue. May be involved in the fusion of the spermatozoa with the oocyte during fertilization. Also acts as a costimulatory factor for T-cells which induces the differentiation of CD4+ into T-regulatory 1 cells. T-regulatory 1 cells suppress immune responses by secreting interleukin-10, and therefore are thought to prevent autoimmunity.

## Research Area

## Image Data



Western blot analysis of CD46 in K562 cell lysate.

## Note

For research use only.