

Product Name: CD42b (1R11) Rabbit Monoclonal Antibody
Catalog #: AMRe08395



Summary

Production Name	CD42b (1R11) Rabbit Monoclonal Antibody
Description	Rabbit Monoclonal Antibody
Host	Rabbit
Application	WB,ELISA
Reactivity	Human

Performance

Conjugation	Unconjugated
Modification	Unmodified
Isotype	IgG
Clonality	Monoclonal
Form	Liquid
Storage	Store at 4°C short term. Aliquot and store at -20°C long term. Avoid freeze/thaw cycles.
Buffer	Rabbit IgG in phosphate buffered saline , pH 7.4, 150mM NaCl, 0.02% New type preservative N and 50% glycerol. Store at +4°C short term. Store at -20°C long term. Avoid freeze / thaw cycle.
Purification	Affinity purification

Immunogen

Gene Name	GP1BA
Alternative Names	Antigen CD42b alpha; BDPLT1; BDPLT3; BSS; CD42b alpha; DBPLT3; Glycoprotein Ibalpha; GP Ib alpha; GP1B; GP1BA; GPIb alpha; GPIbA; VWDP;
Gene ID	2811.0
SwissProt ID	P07359.

Application

Dilution Ratio	WB 1:1000-1:5000
Molecular Weight	72kDa

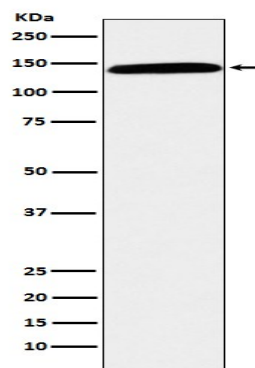
Product Name: CD42b (1R11) Rabbit Monoclonal Antibody
Catalog #: AMRe08395

Background

CD42b is a platelet activation marker involved in the process of coagulation as an aggregating factor. It interacts with extracellular matrix as well as with adhesion molecules. Its expression and activation seems to be regulated by VEGF and PDGF. GP-Ib, a surface membrane protein of platelets, participates in the formation of platelet plugs by binding to the A1 domain of vWF, which is already bound to the subendothelium.

Research Area

Image Data



Western blot analysis of CD42b expression in human spleen lysate.

Note

For research use only.