

Summary

Production Name	CD26 (3D8) Rabbit Monoclonal Antibody
Description	Rabbit Monoclonal Antibody
Host	Rabbit
Application	WB
Reactivity	Human,Mouse,Rat

Performance

Conjugation	Unconjugated
Modification	Unmodified
Isotype	IgG
Clonality	Monoclonal
Form	Liquid
Storage	Store at 4°C short term. Aliquot and store at -20°C long term. Avoid freeze/thaw cycles.
Buffer	Supplied in 50mM Tris-Glycine(pH 7.4), 0.15M NaCl, 40%Glycerol, 0.01% New type preservative N and 0.05% BSA.
Purification	Affinity purification

Immunogen

Gene Name	DPP4 Dipeptidyl peptidase 4; ADABP; Adenosine deaminase complexing protein 2; ADCP-2;
Alternative Names	Dipeptidyl peptidase IV; DPP IV; T-cell activation antigen CD26; TP103; CD26; DPP4; ADCP2; DPP 4; DPP IV;
Gene ID	1803.0
SwissProt ID	P27487.A synthetic peptide of human CD26

Application

Dilution Ratio	WB: 1:2000-1:10000
Molecular Weight	88kDa

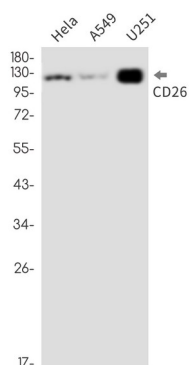
Background

Interacts with multiple important cell surface ligands, such as adenosine deaminase, fibronectin, and IGF2 receptor to influence processes like T cell activation, cell migration and proliferation. Several DDP4 inhibitors have been developed and their effects have been tested in the field of diabetes, cardiovascular disease and tumor immunity. Cell surface glycoprotein receptor involved in the costimulatory signal essential for T-cell receptor (TCR)-mediated T- cell activation (PubMed:10951221, PubMed:10900005, PubMed:11772392, PubMed:17287217). Acts as a positive regulator of T-cell coactivation, by binding at least ADA, CAV1, IGF2R, and PTPRC (PubMed:10951221, PubMed:10900005, PubMed:11772392, PubMed:14691230). Its binding to CAV1 and CARD11 induces T-cell proliferation and NF-kappa-B activation in a T-cell receptor/CD3-dependent manner (PubMed:17287217). Its interaction with ADA also regulates lymphocyte-epithelial cell adhesion (PubMed:11772392). In association with FAP is involved in the pericellular proteolysis of the extracellular matrix (ECM), the migration and invasion of endothelial cells into the ECM (PubMed:16651416, PubMed:10593948). May be involved in the promotion of lymphatic endothelial cells adhesion, migration and tube formation (PubMed:18708048). When overexpressed, enhanced cell proliferation, a process inhibited by GPC3 (PubMed:17549790). Acts also as a serine exopeptidase with a dipeptidyl peptidase activity that regulates various physiological processes by cleaving peptides in the circulation, including many chemokines, mitogenic growth factors, neuropeptides and peptide hormones such as brain natriuretic peptide 32 (PubMed:16254193, PubMed:10570924). Removes N-terminal dipeptides sequentially from polypeptides having unsubstituted N-termini provided that the penultimate residue is proline (PubMed:10593948).

Research Area

Image Data

Product Name: CD26 (3D8) Rabbit Monoclonal Antibody
Catalog #: AMRe08311



Western blot detection of CD26 in HeLa,A549,U251 cell lysates using CD26 antibody(1:1000 diluted).

Note

For research use only.