

Product Name: CD23 (17L19) Rabbit Monoclonal Antibody
Catalog #: AMRe08292

Summary

Production Name	CD23 (17L19) Rabbit Monoclonal Antibody
Description	Rabbit Monoclonal Antibody
Host	Rabbit
Application	WB,ELISA
Reactivity	Human

Performance

Conjugation	Unconjugated
Modification	Unmodified
Isotype	IgG
Clonality	Monoclonal
Form	Liquid
Storage	Store at 4°C short term. Aliquot and store at -20°C long term. Avoid freeze/thaw cycles.
Buffer	Rabbit IgG in phosphate buffered saline , pH 7.4, 150mM NaCl, 0.02% New type preservative N and 50% glycerol. Store at +4°C short term. Store at -20°C long term. Avoid freeze / thaw cycle.
Purification	Affinity purification

Immunogen

Gene Name	FCER2
Alternative Names	CD23; FCE2; CD23A; IGBF; CLEC4J; FCER2;
Gene ID	2208.0
SwissProt ID	P06734.

Application

Dilution Ratio	WB 1:500-1:1000
Molecular Weight	36kDa

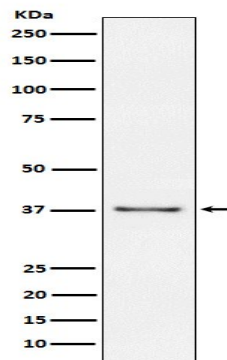
Product Name: CD23 (17L19) Rabbit Monoclonal Antibody
Catalog #: AMRe08292

Background

This receptor has essential roles in the regulation of IgE production and in the differentiation of B-cells (it is a B-cell-specific antigen). Low-affinity receptor for immunoglobulin E (IgE) and CR2/CD21. Has essential roles in the regulation of IgE production and in the differentiation of B-cells (it is a B-cell-specific antigen).

Research Area

Image Data



Western blot analysis of CD23 expression in Raji cell lysate.

Note

For research use only.