

Product Name: CD21 (14S6) Rabbit Monoclonal Antibody
Catalog #: AMRe08280

Summary

Production Name	CD21 (14S6) Rabbit Monoclonal Antibody
Description	Rabbit Monoclonal Antibody
Host	Rabbit
Application	WB,ELISA
Reactivity	Human,Mouse

Performance

Conjugation	Unconjugated
Modification	Unmodified
Isotype	IgG
Clonality	Monoclonal
Form	Liquid
Storage	Store at 4°C short term. Aliquot and store at -20°C long term. Avoid freeze/thaw cycles.
Buffer	Rabbit IgG in phosphate buffered saline , pH 7.4, 150mM NaCl, 0.02% New type preservative N and 50% glycerol. Store at +4°C short term. Store at -20°C long term. Avoid freeze / thaw cycle.
Purification	Affinity purification

Immunogen

Gene Name	CR2 CR2; C3DR; CD21 antigen; CVID7; Complement receptors type 2; CD21; Complement
Alternative Names	C3d receptor; EBV receptor; SLEB9; Complement receptor type 2; CR; Epstein-Barr virus receptor;
Gene ID	1380.0
SwissProt ID	P20023.

Application

Dilution Ratio	WB 1:1000-1:5000
Molecular Weight	113kDa

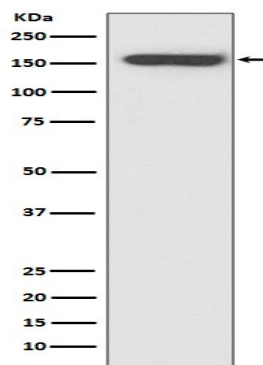
Product Name: CD21 (14S6) Rabbit Monoclonal Antibody
Catalog #: AMRe08280

Background

Receptor for complement C3Dd, for the Epstein-Barr virus on human B-cells and T-cells and for HNRPU. Participates in B lymphocytes activation. (Microbial infection) Acts as a receptor for Epstein-Barr virus. Receptor for complement C3, for the Epstein-Barr virus on human B-cells and T-cells and for HNRNPU (PubMed: [7753047](http://www.uniprot.org/citations/7753047)). Participates in B lymphocytes activation (PubMed: [7753047](http://www.uniprot.org/citations/7753047)).

Research Area

Image Data



Western blot analysis of CD21 expression in Raji cell lysate.

Note

For research use only.