

## Summary

<b>Production Name</b>	CD20 (18I8) Rabbit Monoclonal Antibody
<b>Description</b>	Rabbit Monoclonal Antibody
<b>Host</b>	Rabbit
<b>Application</b>	WB
<b>Reactivity</b>	Human

## Performance

<b>Conjugation</b>	Unconjugated
<b>Modification</b>	Unmodified
<b>Isotype</b>	IgG
<b>Clonality</b>	Monoclonal
<b>Form</b>	Liquid
<b>Storage</b>	Store at 4°C short term. Aliquot and store at -20°C long term. Avoid freeze/thaw cycles.
<b>Buffer</b>	Supplied in 50mM Tris-Glycine(pH 7.4), 0.15M NaCl, 40%Glycerol, 0.01% New type preservative N and 0.05% BSA.
<b>Purification</b>	Affinity purification

## Immunogen

<b>Gene Name</b>	MS4A1
<b>Alternative Names</b>	B1; S7; Bp35; CD20; MS4A2; LEU-16; MS4A1
<b>Gene ID</b>	931.0
<b>SwissProt ID</b>	P11836.A synthetic peptide of human CD20

## Application

<b>Dilution Ratio</b>	WB: 1:2000
<b>Molecular Weight</b>	33kDa

## Background

This protein may be involved in the regulation of B-cell activation and proliferation. CD20 (MS4A1, membrane-spanning 4-

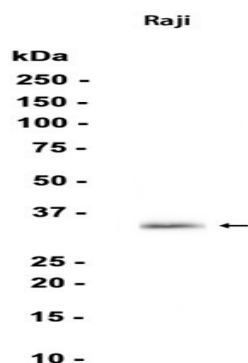
**Product Name: CD20 (1818) Rabbit Monoclonal Antibody**  
**Catalog #: AMRe08269**



domains, subfamily A, member 1) is a member of the membrane-spanning 4A gene family. Members of this nascent protein family are characterized by common structural features and similar intron/exon splice boundaries and display unique expression patterns among hematopoietic cells and nonlymphoid tissues. B-lymphocyte-specific membrane protein that plays a role in the regulation of cellular calcium influx necessary for the development, differentiation, and activation of B-lymphocytes (PubMed: [3925015](http://www.uniprot.org/citations/3925015), PubMed: [7684739](http://www.uniprot.org/citations/7684739), PubMed: [12920111](http://www.uniprot.org/citations/12920111)). Functions as a store-operated calcium (SOC) channel component promoting calcium influx after activation by the B-cell receptor/BCR (PubMed: [7684739](http://www.uniprot.org/citations/7684739), PubMed: [12920111](http://www.uniprot.org/citations/12920111), PubMed: [18474602](http://www.uniprot.org/citations/18474602)).

## Research Area

## Image Data



Western blot analysis of extracts from Raji cells using RM4178 at 1:1000.

## Note

For research use only.