

Product Name: CD162 (5S17) Rabbit Monoclonal Antibody
Catalog #: AMRe08238

Summary

Production Name	CD162 (5S17) Rabbit Monoclonal Antibody
Description	Rabbit Monoclonal Antibody
Host	Rabbit
Application	WB,ELISA
Reactivity	Human

Performance

Conjugation	Unconjugated
Modification	Unmodified
Isotype	IgG
Clonality	Monoclonal
Form	Liquid
Storage	Store at 4°C short term. Aliquot and store at -20°C long term. Avoid freeze/thaw cycles.
Buffer	Rabbit IgG in phosphate buffered saline , pH 7.4, 150mM NaCl, 0.02% New type preservative N and 50% glycerol. Store at +4°C short term. Store at -20°C long term. Avoid freeze / thaw cycle.
Purification	Affinity purification

Immunogen

Gene Name	SELPLG
Alternative Names	CD162; CLA; PSGL1; SELPLG;
Gene ID	6404.0
SwissProt ID	Q14242.

Application

Dilution Ratio	WB 1:500-1:1000
Molecular Weight	43kDa

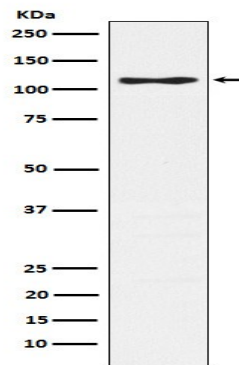
Product Name: CD162 (5S17) Rabbit Monoclonal Antibody
Catalog #: AMRe08238

Background

A SLe(x)-type proteoglycan, which through high affinity, calcium-dependent interactions with E-, P- and L-selectins, mediates rapid rolling of leukocytes over vascular surfaces during the initial steps in inflammation. Critical for the initial leukocyte capture. A SLe(x)-type proteoglycan, which through high affinity, calcium-dependent interactions with E-, P- and L-selectins, mediates rapid rolling of leukocytes over vascular surfaces during the initial steps in inflammation. Critical for the initial leukocyte capture.

Research Area

Image Data



Western blot analysis of CD162 expression in Jurkat cell lysate.

Note

For research use only.