

**Product Name: CD147 (14T8) Rabbit Monoclonal Antibody**  
**Catalog #: AMRe08214**

---

## Summary

<b>Production Name</b>	CD147 (14T8) Rabbit Monoclonal Antibody
<b>Description</b>	Rabbit Monoclonal Antibody
<b>Host</b>	Rabbit
<b>Application</b>	WB
<b>Reactivity</b>	Mouse

## Performance

<b>Conjugation</b>	Unconjugated
<b>Modification</b>	Unmodified
<b>Isotype</b>	IgG
<b>Clonality</b>	Monoclonal
<b>Form</b>	Liquid
<b>Storage</b>	Store at 4°C short term. Aliquot and store at -20°C long term. Avoid freeze/thaw cycles.
<b>Buffer</b>	Supplied in 50mM Tris-Glycine(pH 7.4), 0.15M NaCl, 40%Glycerol, 0.01% New type preservative N and 0.05% BSA.
<b>Purification</b>	Affinity purification

## Immunogen

<b>Gene Name</b>	5A11 antigen; Basigin; Blood brain barrier HT7 antigen; Bsg; CD147; Collagenase stimulatory factor; EMMPRIN; Extracellular matrix metalloproteinase inducer;
<b>Alternative Names</b>	Leukocyte activation antigen M6; Neurothelin; OK blood group; OK blood group antigen; TCSF; Tumor cell derived collagenase stimulatory factor;
<b>Gene ID</b>	
<b>SwissProt ID</b>	P18572(mouse)(human:P35613 ).Recombinant protein of mouse CD147

## Application

<b>Dilution Ratio</b>	WB: 1:2000
<b>Molecular Weight</b>	43kDa

---

**Product Name: CD147 (14T8) Rabbit Monoclonal Antibody**  
**Catalog #: AMRe08214**

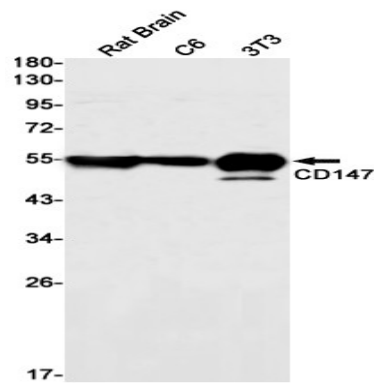
---

## Background

Plays pivotal roles in spermatogenesis, embryo implantation, neural network formation and tumor progression. Stimulates adjacent fibroblasts to produce matrix metalloproteinases (MMPS).

## Research Area

## Image Data



Western blot detection of CD147 in Rat Brain,C6,3T3 cell lysates using CD147 antibody(1:1000 diluted).

## Note

For research use only.