

**Product Name: CD13 (14U5) Rabbit Monoclonal Antibody**  
**Catalog #: AMRe08200**

---

## Summary

<b>Production Name</b>	CD13 (14U5) Rabbit Monoclonal Antibody
<b>Description</b>	Rabbit Monoclonal Antibody
<b>Host</b>	Rabbit
<b>Application</b>	WB
<b>Reactivity</b>	Human,Rat

## Performance

<b>Conjugation</b>	Unconjugated
<b>Modification</b>	Unmodified
<b>Isotype</b>	IgG
<b>Clonality</b>	Monoclonal
<b>Form</b>	Liquid
<b>Storage</b>	Store at 4°C short term. Aliquot and store at -20°C long term. Avoid freeze/thaw cycles.
<b>Buffer</b>	Supplied in 50mM Tris-Glycine(pH 7.4), 0.15M NaCl, 40%Glycerol, 0.01% New type preservative N and 0.05% BSA.
<b>Purification</b>	Affinity purification

## Immunogen

<b>Gene Name</b>	ANPEP
<b>Alternative Names</b>	PEPN; Aminopeptidase N; AP-N; hAPN; Alanyl aminopeptidase; Aminopeptidase M; AP-M; Microsomal aminopeptidase; gp150; CD_antigen=CD13; ANPEP; APN; CD13;
<b>Gene ID</b>	290.0
<b>SwissProt ID</b>	P15144.A synthetic peptide of human CD13

## Application

<b>Dilution Ratio</b>	WB: 1:1000-1:5000
<b>Molecular Weight</b>	110kDa

**Product Name: CD13 (14U5) Rabbit Monoclonal Antibody**  
**Catalog #: AMRe08200**

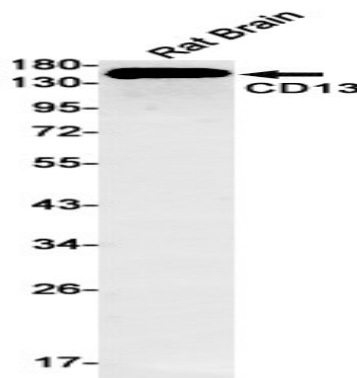
---

## Background

Aminopeptidase N (APN, CD13) is a widely expressed, membrane-bound proteolytic enzyme that breaks down peptides during digestion, cleaves cell surface antigens during antigen presentation, and acts as a receptor for human viruses, including several coronaviruses. Plays a role in the final digestion of peptides generated from hydrolysis of proteins by gastric and pancreatic proteases. Broad specificity aminopeptidase which plays a role in the final digestion of peptides generated from hydrolysis of proteins by gastric and pancreatic proteases. Also involved in the processing of various peptides including peptide hormones, such as angiotensin III and IV, neuropeptides, and chemokines. May also be involved the cleavage of peptides bound to major histocompatibility complex class II molecules of antigen presenting cells. May have a role in angiogenesis and promote cholesterol crystallization. May have a role in amino acid transport by acting as binding partner of amino acid transporter SLC6A19 and regulating its activity (By similarity).

## Research Area

## Image Data



Western blot detection of CD13 in Rat Brain cell using CD13 antibody(1:1000 diluted).

## Note

For research use only.