

**Product Name: CCR9 (11E6) Rabbit Monoclonal Antibody**  
**Catalog #: AMRe08163**

---

## Summary

<b>Production Name</b>	CCR9 (11E6) Rabbit Monoclonal Antibody
<b>Description</b>	Rabbit Monoclonal Antibody
<b>Host</b>	Rabbit
<b>Application</b>	WB
<b>Reactivity</b>	Human,Mouse,Rat

## Performance

<b>Conjugation</b>	Unconjugated
<b>Modification</b>	Unmodified
<b>Isotype</b>	IgG
<b>Clonality</b>	Monoclonal
<b>Form</b>	Liquid
<b>Storage</b>	Store at 4°C short term. Aliquot and store at -20°C long term. Avoid freeze/thaw cycles.
<b>Buffer</b>	Rabbit IgG in phosphate buffered saline , pH 7.4, 150mM NaCl, 0.02% New type preservative N and 50% glycerol. Store at +4°C short term. Store at -20°C long term. Avoid freeze / thaw cycle.
<b>Purification</b>	Affinity purification

## Immunogen

<b>Gene Name</b>	CCR9
<b>Alternative Names</b>	G-protein coupled receptor 28; GPR-9-6; CDw199;CCR9
<b>Gene ID</b>	10803.0
<b>SwissProt ID</b>	P51686.

## Application

<b>Dilution Ratio</b>	WB 1:500-1:2000
<b>Molecular Weight</b>	42kDa

**Product Name: CCR9 (11E6) Rabbit Monoclonal Antibody**  
**Catalog #: AMRe08163**

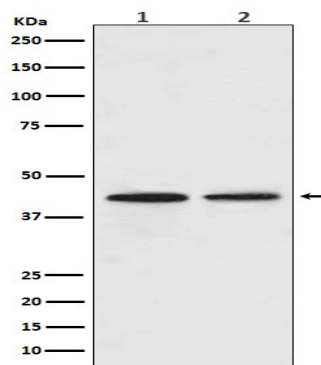
---

## Background

Receptor for chemokine SCYA25/TECK. Subsequently transduces a signal by increasing the intracellular calcium ions level. Alternative coreceptor with CD4 for HIV-1 infection. Receptor for chemokine SCYA25/TECK. Subsequently transduces a signal by increasing the intracellular calcium ions level.

## Research Area

## Image Data



Western blot analysis of CCR9 in (1) A549 cell lysate; (2) Daudi cell lysate.

## Note

For research use only.