

**Product Name: CCL19 (11F3) Rabbit Monoclonal Antibody**  
**Catalog #: AMRe08137**

---

## Summary

<b>Production Name</b>	CCL19 (11F3) Rabbit Monoclonal Antibody
<b>Description</b>	Rabbit Monoclonal Antibody
<b>Host</b>	Rabbit
<b>Application</b>	WB,ELISA
<b>Reactivity</b>	Human

## Performance

<b>Conjugation</b>	Unconjugated
<b>Modification</b>	Unmodified
<b>Isotype</b>	IgG
<b>Clonality</b>	Monoclonal
<b>Form</b>	Liquid
<b>Storage</b>	Store at 4°C short term. Aliquot and store at -20°C long term. Avoid freeze/thaw cycles.
<b>Buffer</b>	Rabbit IgG in phosphate buffered saline , pH 7.4, 150mM NaCl, 0.02% New type preservative N and 50% glycerol. Store at +4°C short term. Store at -20°C long term. Avoid freeze / thaw cycle.
<b>Purification</b>	Affinity purification

## Immunogen

<b>Gene Name</b>	CCL19
<b>Alternative Names</b>	CCL 19;CK beta 11;EBI 1 ligand chemokine;ELC;Exodus3;;MIP3 beta;SCYA 19;SCYA19
<b>Gene ID</b>	6363.0
<b>SwissProt ID</b>	Q99731.

## Application

<b>Dilution Ratio</b>	WB 1:500-1:2000
<b>Molecular Weight</b>	11kDa

**Product Name: CCL19 (11F3) Rabbit Monoclonal Antibody**  
**Catalog #: AMRe08137**

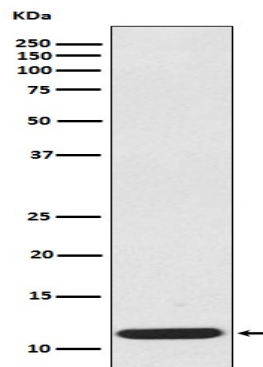
---

## Background

May play a role not only in inflammatory and immunological responses but also in normal lymphocyte recirculation and homing. May play an important role in trafficking of T-cells in thymus, and T-cell and B-cell migration to secondary lymphoid organs. Binds to chemokine receptor CCR7. Recombinant CCL19 shows potent chemotactic activity for T-cells and B-cells but not for granulocytes and monocytes. May play a role not only in inflammatory and immunological responses but also in normal lymphocyte recirculation and homing. May play an important role in trafficking of T-cells in thymus, and T-cell and B-cell migration to secondary lymphoid organs. Binds to chemokine receptor CCR7. Recombinant CCL19 shows potent chemotactic activity for T-cells and B-cells but not for granulocytes and monocytes. Binds to atypical chemokine receptor ACKR4 and mediates the recruitment of beta- arrestin (ARRB1/2) to ACKR4.

## Research Area

## Image Data



Western blot analysis of extracts from CCL19 recombinant protein, using CCL19 antibody.

## Note

For research use only.