

**Product Name: Caspase-9 (13Z10) Rabbit Monoclonal Antibody**  
**Catalog #: AMRe07987**



## Summary

<b>Production Name</b>	Caspase-9 (13Z10) Rabbit Monoclonal Antibody
<b>Description</b>	Rabbit Monoclonal Antibody
<b>Host</b>	Rabbit
<b>Application</b>	WB,ELISA
<b>Reactivity</b>	Human

## Performance

<b>Conjugation</b>	Unconjugated
<b>Modification</b>	Unmodified
<b>Isotype</b>	IgG
<b>Clonality</b>	Monoclonal
<b>Form</b>	Liquid
<b>Storage</b>	Store at 4°C short term. Aliquot and store at -20°C long term. Avoid freeze/thaw cycles.
<b>Buffer</b>	Rabbit IgG in phosphate buffered saline , pH 7.4, 150mM NaCl, 0.02% New type preservative N and 50% glycerol. Store at +4°C short term. Store at -20°C long term. Avoid freeze / thaw cycle.
<b>Purification</b>	Affinity purification

## Immunogen

<b>Gene Name</b>	CASP9
<b>Alternative Names</b>	APAF-3; Caspase9; ICE-LAP6; Apoptotic protease Mch-6; CASP-9; Caspase-9; Caspase-9 precursor; MCH6; RNCASP9;
<b>Gene ID</b>	842.0
<b>SwissProt ID</b>	P55211.

## Application

<b>Dilution Ratio</b>	WB 1:500-1:2000
<b>Molecular Weight</b>	46kDa

**Product Name: Caspase-9 (13Z10) Rabbit Monoclonal Antibody**  
**Catalog #: AMRe07987**

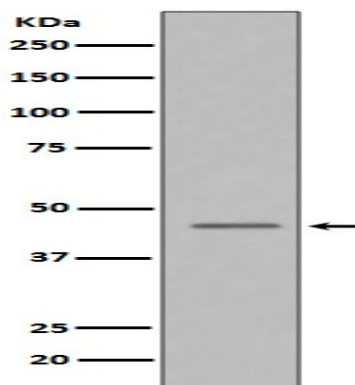


## Background

Caspase-9 (ICE-LAP6, Mch6) is an important member of the cysteine aspartic acid protease (caspase) family. Upon apoptotic stimulation, cytochrome c released from mitochondria associates with the 47 kDa procaspase-9/Apaf 1. Apaf-1 mediated activation of caspase-9 involves intrinsic proteolytic processing resulting in cleavage at Asp315 and producing a p35 subunit. Involved in the activation cascade of caspases responsible for apoptosis execution. Binding of caspase-9 to Apaf-1 leads to activation of the protease which then cleaves and activates caspase-3. Promotes DNA damage-induced apoptosis in a ABL1/c-Abl-dependent manner. Proteolytically cleaves poly(ADP-ribose) polymerase (PARP).

## Research Area

## Image Data



Western blot analysis of Caspase-9 in HeLa cell lysate treated with Camptothecin.

## Note

For research use only.