

**Product Name: Calumenin (14E19) Rabbit Monoclonal Antibody**  
**Catalog #: AMRe07880**



## Summary

<b>Production Name</b>	Calumenin (14E19) Rabbit Monoclonal Antibody
<b>Description</b>	Rabbit Monoclonal Antibody
<b>Host</b>	Rabbit
<b>Application</b>	WB
<b>Reactivity</b>	Human,Mouse,Rat

## Performance

<b>Conjugation</b>	Unconjugated
<b>Modification</b>	Unmodified
<b>Isotype</b>	IgG
<b>Clonality</b>	Monoclonal
<b>Form</b>	Liquid
<b>Storage</b>	Store at 4°C short term. Aliquot and store at -20°C long term. Avoid freeze/thaw cycles.
<b>Buffer</b>	Supplied in 50mM Tris-Glycine(pH 7.4), 0.15M NaCl, 40%Glycerol, 0.01% New type preservative N and 0.05% BSA.
<b>Purification</b>	Affinity purification

## Immunogen

<b>Gene Name</b>	CALU
<b>Alternative Names</b>	CALU; Calumenin 1; Calumenin 2; Calumenin; Crocalbin;
<b>Gene ID</b>	813.0
<b>SwissProt ID</b>	O43852.A synthetic peptide of human Calumenin

## Application

<b>Dilution Ratio</b>	WB: 1:1000
<b>Molecular Weight</b>	37kDa

## Background

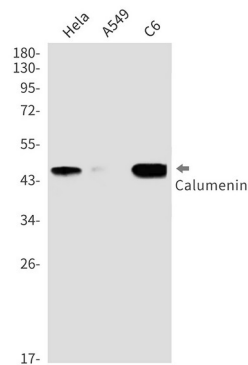
**Product Name: Calumenin (14E19) Rabbit Monoclonal Antibody**  
**Catalog #: AMRe07880**



Involved in regulation of vitamin K-dependent carboxylation of multiple amino-terminal glutamate residues. Seems to inhibit gamma-carboxylase GGCX. Binds 7 calcium ions with a low affinity. Involved in regulation of vitamin K-dependent carboxylation of multiple N-terminal glutamate residues. Seems to inhibit gamma- carboxylase GGCX. Binds 7 calcium ions with a low affinity (By similarity).

## Research Area

## Image Data



Western blot detection of Calumenin in HeLa,A549,C6 cell lysates using Calumenin antibody(1:1000 diluted).

## Note

For research use only.