

**Product Name: Cadherin 16 (15J2) Rabbit Monoclonal Antibody**  
**Catalog #: AMRe07826**



## Summary

<b>Production Name</b>	Cadherin 16 (15J2) Rabbit Monoclonal Antibody
<b>Description</b>	Rabbit Monoclonal Antibody
<b>Host</b>	Rabbit
<b>Application</b>	WB
<b>Reactivity</b>	Human,Mouse

## Performance

<b>Conjugation</b>	Unconjugated
<b>Modification</b>	Unmodified
<b>Isotype</b>	IgG
<b>Clonality</b>	Monoclonal
<b>Form</b>	Liquid
<b>Storage</b>	Store at 4°C short term. Aliquot and store at -20°C long term. Avoid freeze/thaw cycles.
<b>Buffer</b>	Supplied in 50mM Tris-Glycine(pH 7.4), 0.15M NaCl, 40%Glycerol, 0.01% New type preservative N and 0.05% BSA.
<b>Purification</b>	Affinity purification

## Immunogen

<b>Gene Name</b>	CDH16
<b>Alternative Names</b>	Cadherin 16; Cadherin kidney; CDH16; Kidney cadherin; Ksp cadherin;
<b>Gene ID</b>	1014.0
<b>SwissProt ID</b>	O75309.Recombinant protein of human Cadherin 16

## Application

<b>Dilution Ratio</b>	WB: 1:1000
<b>Molecular Weight</b>	90kDa

## Background

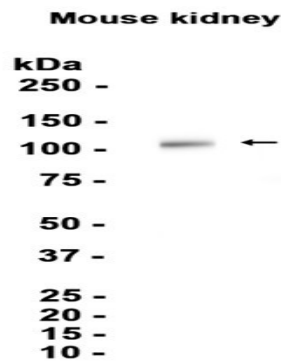
**Product Name: Cadherin 16 (15J2) Rabbit Monoclonal Antibody**  
**Catalog #: AMRe07826**



Cadherins are calcium dependent cell adhesion proteins. They preferentially interact with themselves in a homophilic manner in connecting cells; cadherins may thus contribute to the sorting of heterogeneous cell types. Cadherins are calcium-dependent cell adhesion proteins. They preferentially interact with themselves in a homophilic manner in connecting cells; cadherins may thus contribute to the sorting of heterogeneous cell types.

## Research Area

## Image Data



Western blot analysis of extracts from Mouse kidney tissue using RM6027 at 1:1000.

## Note

For research use only.