

**Product Name: C Reactive Protein (15D4) Rabbit
Monoclonal Antibody
Catalog #: AMRe07703**

Summary

Production Name	C Reactive Protein (15D4) Rabbit Monoclonal Antibody
Description	Rabbit Monoclonal Antibody
Host	Rabbit
Application	WB,ELISA
Reactivity	Human

Performance

Conjugation	Unconjugated
Modification	Unmodified
Isotype	IgG
Clonality	Monoclonal
Form	Liquid
Storage	Store at 4°C short term. Aliquot and store at -20°C long term. Avoid freeze/thaw cycles.
Buffer	Rabbit IgG in phosphate buffered saline , pH 7.4, 150mM NaCl, 0.02% New type preservative N and 50% glycerol. Store at +4°C short term. Store at -20°C long term. Avoid freeze / thaw cycle.
Purification	Affinity purification

Immunogen

Gene Name	CRP
Alternative Names	CRP; Pentraxin 1; PTX1; C reactive protein pentraxin related;
Gene ID	1401.0
SwissProt ID	P02741.

Application

Dilution Ratio	WB 1:1000-1:2000
Molecular Weight	25kDa

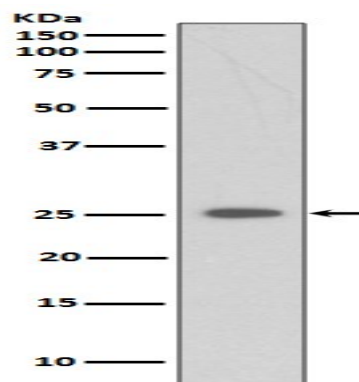
**Product Name: C Reactive Protein (15D4) Rabbit
Monoclonal Antibody
Catalog #: AMRe07703**

Background

Serum CRP values are routinely measured to detect or monitor many human diseases and minor elevations of C-reactive protein are predictive of cardiovascular events in patients with coronary heart disease. CRP promotes host defense, is an efficient activator of the classical C cascade, and shown to be opsonic. The opsonic and C activation activities are responsible for the nonspecific host defense activities providing protection in the preimmune stage of acute infections. Displays several functions associated with host defense: it promotes agglutination, bacterial capsular swelling, phagocytosis and complement fixation through its calcium-dependent binding to phosphorylcholine. Can interact with DNA and histones and may scavenge nuclear material released from damaged circulating cells.

Research Area

Image Data



Western blot analysis of CRP expression in Etoposide treated 293 whole cell lysates.

Note

For research use only.