

Product Name: Bim (5Z18) Rabbit Monoclonal Antibody
Catalog #: AMRe07561



Summary

Production Name	Bim (5Z18) Rabbit Monoclonal Antibody
Description	Rabbit Monoclonal Antibody
Host	Rabbit
Application	WB
Reactivity	Human,Mouse,Rat

Performance

Conjugation	Unconjugated
Modification	Unmodified
Isotype	IgG
Clonality	Monoclonal
Form	Liquid
Storage	Store at 4°C short term. Aliquot and store at -20°C long term. Avoid freeze/thaw cycles.
Buffer	Supplied in 50mM Tris-Glycine(pH 7.4), 0.15M NaCl, 40%Glycerol, 0.01% New type preservative N and 0.05% BSA.
Purification	Affinity purification

Immunogen

Gene Name	BCL2L11
Alternative Names	BAM; BIM; BOD; BimL; BimS; BimEL; BIM-beta6; BIM-beta7; BIM-alpha6;BCL2L11;
Gene ID	10018.0
SwissProt ID	O43521 .A synthetic peptide of human Bim

Application

Dilution Ratio	WB: 1:1000
Molecular Weight	22kDa

Background

Bim a pro-apoptotic member of the BCL-2 protein family. Interacts with other members of the BCL-2 protein family,

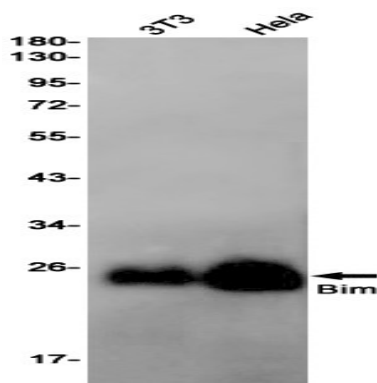
Product Name: Bim (5Z18) Rabbit Monoclonal Antibody
Catalog #: AMRe07561



including BCL2, BCL2L1/BCL-X(L), and MCL1, and act as an apoptotic activator. Its expression can be induced by nerve growth factor (NGF), as well as by the forkhead transcription factor FKHR-L1, which suggests a role in neuronal and lymphocyte apoptosis. Induces apoptosis and anoikis. Isoform BimL is more potent than isoform BimEL. Isoform Bim-alpha1, isoform Bim-alpha2 and isoform Bim-alpha3 induce apoptosis, although less potent than isoform BimEL, isoform BimL and isoform BimS. Isoform Bim-gamma induces apoptosis. Isoform Bim-alpha3 induces apoptosis possibly through a caspase- mediated pathway. Isoform BimAC and isoform BimABC lack the ability to induce apoptosis.

Research Area

Image Data



Western blot detection of Bim in 3T3,HeLa cell lysates using Bim antibody(1:1000 diluted).

Note

For research use only.