

**Product Name: beta Casein (1J13) Rabbit Monoclonal Antibody**  
**Catalog #: AMRe07540**



## Summary

|                        |   |
|------------------------|---|
| <b>Production Name</b> | beta Casein (1J13) Rabbit Monoclonal Antibody |
| <b>Description</b>     | Rabbit Monoclonal Antibody                    |
| <b>Host</b>            | Rabbit  |
| <b>Application</b>     | WB,ELISA                                      |
| <b>Reactivity</b>      | Human   |

## Performance

|                     |  |
|---------------------|--|
| <b>Conjugation</b>  | Unconjugated   |
| <b>Modification</b> | Unmodified   |
| <b>Isotype</b>      | IgG  |
| <b>Clonality</b>    | Monoclonal   |
| <b>Form</b>         | Liquid   |
| <b>Storage</b>      | Store at 4°C short term. Aliquot and store at -20°C long term. Avoid freeze/thaw cycles.   |
| <b>Buffer</b>       | Rabbit IgG in phosphate buffered saline , pH 7.4, 150mM NaCl, 0.02% New type preservative N and 50% glycerol. Store at +4°C short term. Store at -20°C long term. Avoid freeze / thaw cycle. |
| <b>Purification</b> | Affinity purification  |

## Immunogen

|                          |                                       |
|--------------------------|---------------------------------------|
| <b>Gene Name</b>         | CSN2                                  |
| <b>Alternative Names</b> | Beta-casein; CASB; Casein beta; Csn2; |
| <b>Gene ID</b>           | 1447.0                                |
| <b>SwissProt ID</b>      | P05814.                               |

## Application

|                         |                 |
|-------------------------|-----------------|
| <b>Dilution Ratio</b>   | WB 1:500~1:1000 |
| <b>Molecular Weight</b> | 25kDa           |

**Product Name: beta Casein (1J13) Rabbit Monoclonal Antibody**  
**Catalog #: AMRe07540**



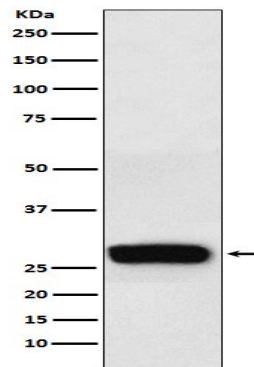
---

## Background

Important role in determination of the surface properties of the casein micelles. Important role in determination of the surface properties of the casein micelles.

## Research Area

## Image Data



Western blot analysis of beta Casein expression in Human milk lysate.

## Note

For research use only.