

Product Name: Bcl-2 (19L10) Rabbit Monoclonal Antibody
Catalog #: AMRe07500

Summary

Production Name	Bcl-2 (19L10) Rabbit Monoclonal Antibody
Description	Rabbit Monoclonal Antibody
Host	Rabbit
Application	WB
Reactivity	Human

Performance

Conjugation	Unconjugated
Modification	Unmodified
Isotype	IgG
Clonality	Monoclonal
Form	Liquid
Storage	Store at 4°C short term. Aliquot and store at -20°C long term. Avoid freeze/thaw cycles.
Buffer	Supplied in 50mM Tris-Glycine(pH 7.4), 0.15M NaCl, 40%Glycerol, 0.01% New type preservative N and 0.05% BSA.
Purification	Affinity purification

Immunogen

Gene Name	BCL2
Alternative Names	Apoptosis regulator Bcl-2; BCL2;
Gene ID	596.0
SwissProt ID	P10415.A synthetic peptide of human Bcl-2

Application

Dilution Ratio	WB: 1:1000
Molecular Weight	26kDa

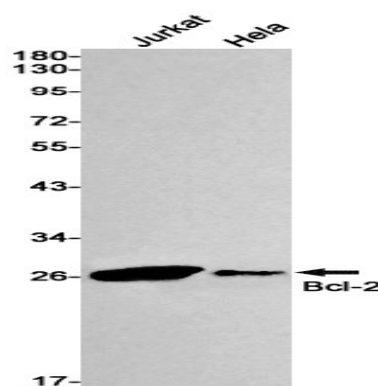
Background

Product Name: Bcl-2 (19L10) Rabbit Monoclonal Antibody
Catalog #: AMRe07500

This gene encodes an integral outer mitochondrial membrane protein that blocks the apoptotic death of some cells such as lymphocytes. Constitutive expression of BCL2, such as in the case of translocation of BCL2 to Ig heavy chain locus, is thought to be the cause of follicular lymphoma. Two transcript variants, produced by alternate splicing, differ in their C-terminal ends. Suppresses apoptosis in a variety of cell systems including factor-dependent lymphohematopoietic and neural cells (PubMed: [1508712](http://www.uniprot.org/citations/1508712), PubMed: [8183370](http://www.uniprot.org/citations/8183370)). Regulates cell death by controlling the mitochondrial membrane permeability (PubMed: [11368354](http://www.uniprot.org/citations/11368354)). Appears to function in a feedback loop system with caspases (PubMed: [11368354](http://www.uniprot.org/citations/11368354)). Inhibits caspase activity either by preventing the release of cytochrome c from the mitochondria and/or by binding to the apoptosis-activating factor (APAF-1) (PubMed: [11368354](http://www.uniprot.org/citations/11368354)). Also acts as an inhibitor of autophagy: interacts with BECN1 and AMBRA1 during non-starvation conditions and inhibits their autophagy function (PubMed: [18570871](http://www.uniprot.org/citations/18570871), PubMed: [21358617](http://www.uniprot.org/citations/21358617), PubMed: [20889974](http://www.uniprot.org/citations/20889974)). May attenuate inflammation by impairing NLRP1- inflammasome activation, hence CASP1 activation and IL1B release (PubMed: [17418785](http://www.uniprot.org/citations/17418785)).

Research Area

Image Data



Western blot detection of Bcl-2 in Jurkat, HeLa cell lysates using Bcl-2 antibody (1:1000 diluted).

Note

For research use only.

**Product Name: Bcl-2 (19L10) Rabbit Monoclonal
Antibody**
Catalog #: AMRe07500

