

Product Name: ASS1 (17N16) Rabbit Monoclonal Antibody
Catalog #: AMRe07233

Summary

Production Name	ASS1 (17N16) Rabbit Monoclonal Antibody
Description	Rabbit Monoclonal Antibody
Host	Rabbit
Application	WB
Reactivity	Human,Mouse,Rat

Performance

Conjugation	Unconjugated
Modification	Unmodified
Isotype	IgG
Clonality	Monoclonal
Form	Liquid
Storage	Store at 4°C short term. Aliquot and store at -20°C long term. Avoid freeze/thaw cycles.
Buffer	Supplied in 50mM Tris-Glycine(pH 7.4), 0.15M NaCl, 40%Glycerol, 0.01% New type preservative N and 0.05% BSA.
Purification	Affinity purification

Immunogen

Gene Name	ASS1
Alternative Names	Argininosuccinate synthase 1; ASS; ass1; ASSA; Citrulline aspartate ligase; CTLN1;
Gene ID	445.0
SwissProt ID	P00966.A synthetic peptide of human ASS1

Application

Dilution Ratio	WB: 1:2000
Molecular Weight	47kDa

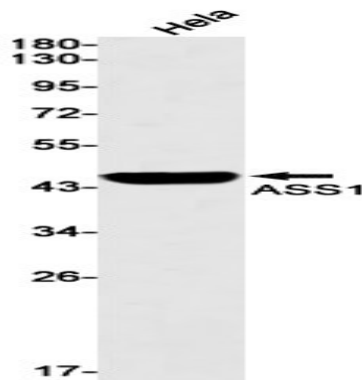
Background

Product Name: ASS1 (17N16) Rabbit Monoclonal Antibody
Catalog #: AMRe07233

Amino-acid biosynthesis; L-arginine biosynthesis; L-arginine from L-ornithine and carbamoyl phosphate: step 2/3. Nitrogen metabolism; urea cycle; (N(omega)-L-arginino)succinate from L-aspartate and L-citrulline: step 1/1. One of the enzymes of the urea cycle, the metabolic pathway transforming neurotoxic ammonia produced by protein catabolism into innocuous urea in the liver of ureotelic animals. Catalyzes the formation of arginosuccinate from aspartate, citrulline and ATP and together with ASL it is responsible for the biosynthesis of arginine in most body tissues.

Research Area

Image Data



Western blot detection of ASS1 in HeLa cell lysates using ASS1 antibody(1:1000 diluted).

Note

For research use only.