

**Product Name: Apolipoprotein CI (10F18) Rabbit  
Monoclonal Antibody  
Catalog #: AMRe07052**

---

## Summary

<b>Production Name</b>	Apolipoprotein CI (10F18) Rabbit Monoclonal Antibody
<b>Description</b>	Rabbit Monoclonal Antibody
<b>Host</b>	Rabbit
<b>Application</b>	WB,ELISA
<b>Reactivity</b>	Human

## Performance

<b>Conjugation</b>	Unconjugated
<b>Modification</b>	Unmodified
<b>Isotype</b>	IgG
<b>Clonality</b>	Monoclonal
<b>Form</b>	Liquid
<b>Storage</b>	Store at 4°C short term. Aliquot and store at -20°C long term. Avoid freeze/thaw cycles.
<b>Buffer</b>	Rabbit IgG in phosphate buffered saline , pH 7.4, 150mM NaCl, 0.02% New type preservative N and 50% glycerol. Store at +4°C short term. Store at -20°C long term. Avoid freeze / thaw cycle.
<b>Purification</b>	Affinity purification

## Immunogen

<b>Gene Name</b>	APOC1
<b>Alternative Names</b>	APO C1; Apo CI; APOC 1; ApoC I; APOC1; APOC1B; ApolipoproteinCI;
<b>Gene ID</b>	341.0
<b>SwissProt ID</b>	P02654.

## Application

<b>Dilution Ratio</b>	WB 1:500-1:1000
<b>Molecular Weight</b>	9kDa

**Product Name: Apolipoprotein CI (10F18) Rabbit  
Monoclonal Antibody  
Catalog #: AMRe07052**

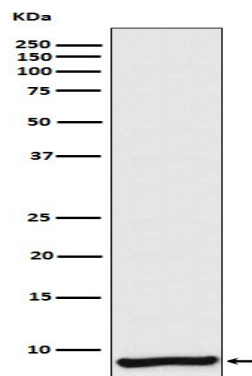
---

## Background

Appears to modulate the interaction of APOE with beta-migrating VLDL and inhibit binding of beta-VLDL to the LDL receptor-related protein. Binds free fatty acids and reduces their intracellular esterification. Inhibitor of lipoprotein binding to the low density lipoprotein (LDL) receptor, LDL receptor-related protein, and very low density lipoprotein (VLDL) receptor. Associates with high density lipoproteins (HDL) and the triacylglycerol-rich lipoproteins in the plasma and makes up about 10% of the protein of the VLDL and 2% of that of HDL. Appears to interfere directly with fatty acid uptake and is also the major plasma inhibitor of cholesteryl ester transfer protein (CETP). Binds free fatty acids and reduces their intracellular esterification. Modulates the interaction of APOE with beta-migrating VLDL and inhibits binding of beta-VLDL to the LDL receptor-related protein.

## Research Area

## Image Data



Western blot analysis of Apolipoprotein CI expression in Human plasma lysate.

## Note

For research use only.