

**Product Name: Apolipoprotein A1 (16D14) Rabbit  
Monoclonal Antibody  
Catalog #: AMRe07051**



## Summary

<b>Production Name</b>	Apolipoprotein A1 (16D14) Rabbit Monoclonal Antibody
<b>Description</b>	Rabbit Monoclonal Antibody
<b>Host</b>	Rabbit
<b>Application</b>	WB
<b>Reactivity</b>	Human,Mouse

## Performance

<b>Conjugation</b>	Unconjugated
<b>Modification</b>	Unmodified
<b>Isotype</b>	IgG
<b>Clonality</b>	Monoclonal
<b>Form</b>	Liquid
<b>Storage</b>	Store at 4°C short term. Aliquot and store at -20°C long term. Avoid freeze/thaw cycles.
<b>Buffer</b>	Rabbit IgG in phosphate buffered saline , pH 7.4, 150mM NaCl, 0.02% New type preservative N and 50% glycerol. Store at +4°C short term. Store at -20°C long term. Avoid freeze / thaw cycle.
<b>Purification</b>	Affinity purification

## Immunogen

<b>Gene Name</b>	APOA1
<b>Alternative Names</b>	APOA1; MGC117399; Apo-AI; ApoA-I; APOAI; Apolipoprotein A1;
<b>Gene ID</b>	335.0
<b>SwissProt ID</b>	P02647.

## Application

<b>Dilution Ratio</b>	WB 1:5000-1:10000
<b>Molecular Weight</b>	31kDa

**Product Name: Apolipoprotein A1 (16D14) Rabbit  
Monoclonal Antibody  
Catalog #: AMRe07051**

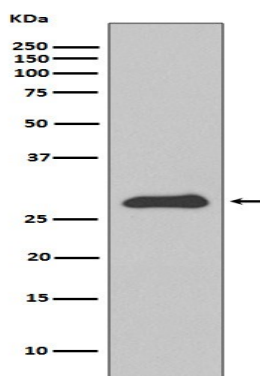


## Background

ApoA1 (Apolipoprotein A1) is a major component of high density lipoprotein (HDL, the "good cholesterol" ) in plasma. It is produced in the liver and small intestine. ApoA1 is a cofactor for lecithin cholesterolacyltransferase (LCAT) that is responsible for the formation of plasma cholesteryl esters and promotes cholesterol efflux from tissues to the liver for excretion. Participates in the reverse transport of cholesterol from tissues to the liver for excretion by promoting cholesterol efflux from tissues and by acting as a cofactor for the lecithin cholesterol acyltransferase (LCAT). As part of the SPAP complex, activates spermatozoa motility.

## Research Area

## Image Data



Western blot analysis of Apolipoprotein A1 expression in HepG2 cell lysate.

## Note

For research use only.