

Product Name: ANPRB (6S5) Rabbit Monoclonal Antibody
Catalog #: AMRe06938

Summary

Production Name	ANPRB (6S5) Rabbit Monoclonal Antibody
Description	Rabbit Monoclonal Antibody
Host	Rabbit
Application	WB,ELISA
Reactivity	Human,Mouse,Rat

Performance

Conjugation	Unconjugated
Modification	Unmodified
Isotype	IgG
Clonality	Monoclonal
Form	Liquid
Storage	Store at 4°C short term. Aliquot and store at -20°C long term. Avoid freeze/thaw cycles.
Buffer	Rabbit IgG in phosphate buffered saline , pH 7.4, 150mM NaCl, 0.02% New type preservative N and 50% glycerol. Store at +4°C short term. Store at -20°C long term. Avoid freeze / thaw cycle.
Purification	Affinity purification

Immunogen

Gene Name	NPR2
Alternative Names	AMDM; ANPB; ANPRB; GCB; GUC2B; GUCY2B; Npr2; NPRB; NPRBi;
Gene ID	4882.0
SwissProt ID	P20594.

Application

Dilution Ratio	WB 1:500-1:2000
Molecular Weight	117kDa

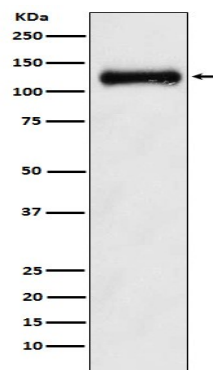
Product Name: ANPRB (6S5) Rabbit Monoclonal Antibody
Catalog #: AMRe06938

Background

Receptor for the C-type natriuretic peptide NPPC/CNP hormone. Has guanylate cyclase activity upon binding of its ligand. May play a role in the regulation of skeletal growth. Receptor for the C-type natriuretic peptide NPPC/CNP hormone. Has guanylate cyclase activity upon binding of its ligand. May play a role in the regulation of skeletal growth.

Research Area

Image Data



Western blot analysis of ANPRB expression in Human fetal kidney lysate.

Note

For research use only.