

**Product Name: alpha Sarcoglycan (14V11) Rabbit
Monoclonal Antibody
Catalog #: AMRe06796**

Summary

Production Name	alpha Sarcoglycan (14V11) Rabbit Monoclonal Antibody
Description	Rabbit Monoclonal Antibody
Host	Rabbit
Application	WB,ELISA
Reactivity	Human,Mouse,Rat

Performance

Conjugation	Unconjugated
Modification	Unmodified
Isotype	IgG
Clonality	Monoclonal
Form	Liquid
Storage	Store at 4°C short term. Aliquot and store at -20°C long term. Avoid freeze/thaw cycles.
Buffer	Rabbit IgG in phosphate buffered saline , pH 7.4, 150mM NaCl, 0.02% New type preservative N and 50% glycerol. Store at +4°C short term. Store at -20°C long term. Avoid freeze / thaw cycle.
Purification	Affinity purification

Immunogen

Gene Name	SGCA
Alternative Names	50DAG; 50kD DAG; adhalin; ADL; Alpha SG; Alpha-sarcoglycan; Asg; DAG2; DMDA2; Dystroglycan 2; LGMD2D; SCARMD1; Sgca;
Gene ID	6442.0
SwissProt ID	Q16586.

Application

Dilution Ratio	WB 1:500-1:2000
Molecular Weight	43kDa

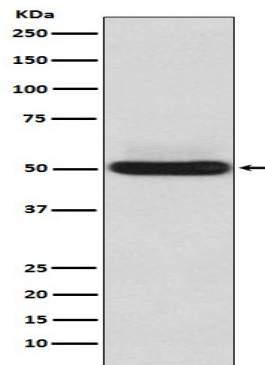
**Product Name: alpha Sarcoglycan (14V11) Rabbit
Monoclonal Antibody
Catalog #: AMRe06796**

Background

Component of the sarcoglycan complex, a subcomplex of the dystrophin-glycoprotein complex which forms a link between the F-actin cytoskeleton and the extracellular matrix. Component of the sarcoglycan complex, a subcomplex of the dystrophin-glycoprotein complex which forms a link between the F-actin cytoskeleton and the extracellular matrix.

Research Area

Image Data



Western blot analysis of alpha Sarcoglycan expression in Human skeletal muscle lysate.

Note

For research use only.