

**Product Name: alpha 1 Spectrin (10S8) Rabbit
Monoclonal Antibody
Catalog #: AMRe06791**

Summary

Production Name	alpha 1 Spectrin (10S8) Rabbit Monoclonal Antibody
Description	Rabbit Monoclonal Antibody
Host	Rabbit
Application	WB
Reactivity	Human,Mouse,Rat

Performance

Conjugation	Unconjugated
Modification	Unmodified
Isotype	IgG
Clonality	Monoclonal
Form	Liquid
Storage	Store at 4°C short term. Aliquot and store at -20°C long term. Avoid freeze/thaw cycles.
Buffer	Rabbit IgG in phosphate buffered saline , pH 7.4, 150mM NaCl, 0.02% New type preservative N and 50% glycerol. Store at +4°C short term. Store at -20°C long term. Avoid freeze / thaw cycle.
Purification	Affinity purification

Immunogen

Gene Name	SPTA1
Alternative Names	EL2; Elliptocytosis2; erythrocyte; Erythroid alpha spectrin; HPP; HS3; SPH3; SPTA; SPTA1;
Gene ID	6708.0
SwissProt ID	P02549.

Application

Dilution Ratio	WB 1:500-1:2000
Molecular Weight	280kDa

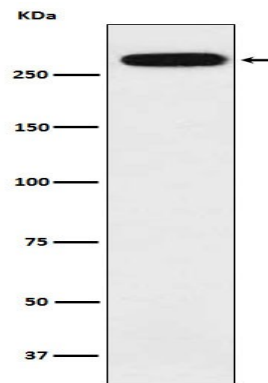
**Product Name: alpha 1 Spectrin (10S8) Rabbit
Monoclonal Antibody
Catalog #: AMRe06791**

Background

Spectrin is the major constituent of the cytoskeletal network underlying the erythrocyte plasma membrane. It associates with band 4.1 and actin to form the cytoskeletal superstructure of the erythrocyte plasma membrane. Spectrin is the major constituent of the cytoskeletal network underlying the erythrocyte plasma membrane. It associates with band 4.1 and actin to form the cytoskeletal superstructure of the erythrocyte plasma membrane.

Research Area

Image Data



Western blot analysis of alpha 1 Spectrin expression in K562 cell lysate.

Note

For research use only.