

## Summary

<b>Production Name</b>	ACE2 (9T7) Rabbit Monoclonal Antibody
<b>Description</b>	Rabbit Monoclonal Antibody
<b>Host</b>	Rabbit
<b>Application</b>	WB,ELISA
<b>Reactivity</b>	Human,Mouse,Rat

## Performance

<b>Conjugation</b>	Unconjugated
<b>Modification</b>	Unmodified
<b>Isotype</b>	IgG
<b>Clonality</b>	Monoclonal
<b>Form</b>	Liquid
<b>Storage</b>	Store at 4°C short term. Aliquot and store at -20°C long term. Avoid freeze/thaw cycles.
<b>Buffer</b>	Rabbit IgG in phosphate buffered saline , pH 7.4, 150mM NaCl, 0.02% New type preservative N and 50% glycerol. Store at +4°C short term. Store at -20°C long term. Avoid freeze / thaw cycle.
<b>Purification</b>	Affinity purification

## Immunogen

<b>Gene Name</b>	ACE2 Angiotensin-converting enzyme 2; ACE-related carboxypeptidase; Angiotensin-converting enzyme homolog; ACEH; Processed angiotensin-converting enzyme 2; ACE 2; ACEH;
<b>Alternative Names</b>	
<b>Gene ID</b>	59272.0
<b>SwissProt ID</b>	Q9BYF1.

## Application

<b>Dilution Ratio</b>	WB 1:1000-1:2000
<b>Molecular Weight</b>	92kDa

---

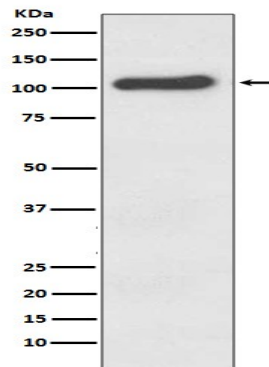
## Background

ACE2 is a carboxypeptidase that catalyses the conversion of angiotensin I to angiotensin 1-9, or of angiotensin II to the vasodilator angiotensin 1-7. ACE2 is a critical component in the renin-angiotensin system (RAS). Also able to hydrolyze apelin-13 and dynorphin-13 with high efficiency. May be an important regulator of heart function. Essential counter-regulatory carboxypeptidase of the renin-angiotensin hormone system that is a critical regulator of blood volume, systemic vascular resistance, and thus cardiovascular homeostasis (PubMed: [27217402](http://www.uniprot.org/citations/27217402)). Converts angiotensin I to angiotensin 1-9, a nine-amino acid peptide with anti-hypertrophic effects in cardiomyocytes, and angiotensin II to angiotensin 1-7, which then acts as a beneficial vasodilator and anti-proliferation agent, counterbalancing the actions of the vasoconstrictor angiotensin II (PubMed: [10969042](http://www.uniprot.org/citations/10969042), PubMed: [10924499](http://www.uniprot.org/citations/10924499), PubMed: [11815627](http://www.uniprot.org/citations/11815627), PubMed: [19021774](http://www.uniprot.org/citations/19021774), PubMed: [14504186](http://www.uniprot.org/citations/14504186)). Also removes the C-terminal residue from three other vasoactive peptides, neurotensin, kinetensin, and des-Arg bradykinin, but is not active on bradykinin (PubMed: [10969042](http://www.uniprot.org/citations/10969042), PubMed: [11815627](http://www.uniprot.org/citations/11815627)). Also cleaves other biological peptides, such as apelins (apelin-13, [Pyr1]apelin-13, apelin-17, apelin-36), casomorphins (beta-casomorphin-7, neocasomorphin) and dynorphin A with high efficiency (PubMed: [11815627](http://www.uniprot.org/citations/11815627), PubMed: [27217402](http://www.uniprot.org/citations/27217402), PubMed: [28293165](http://www.uniprot.org/citations/28293165)). In addition, ACE2 C-terminus is homologous to collectrin and is responsible for the trafficking of the neutral amino acid transporter SL6A19 to the plasma membrane of gut epithelial cells via direct interaction, regulating its expression on the cell surface and its catalytic activity (PubMed: [18424768](http://www.uniprot.org/citations/18424768), PubMed: [19185582](http://www.uniprot.org/citations/19185582)).

## Research Area

## Image Data

Product Name: ACE2 (9T7) Rabbit Monoclonal Antibody  
Catalog #: AMRe06483



Western blot analysis of ACE2 expression in Human kidney lysate.

### Note

For research use only.