

**Product Name: 41701(4B11) Rabbit Monoclonal Antibody**  
**Catalog #: AMRe06325**

---

## Summary

<b>Production Name</b>	41701(4B11) Rabbit Monoclonal Antibody
<b>Description</b>	Rabbit Monoclonal Antibody
<b>Host</b>	Rabbit
<b>Application</b>	WB
<b>Reactivity</b>	Human,Mouse,Rat

## Performance

<b>Conjugation</b>	Unconjugated
<b>Modification</b>	Unmodified
<b>Isotype</b>	IgG
<b>Clonality</b>	Monoclonal
<b>Form</b>	Liquid
<b>Storage</b>	Store at 4°C short term. Aliquot and store at -20°C long term. Avoid freeze/thaw cycles.
<b>Buffer</b>	Supplied in 50mM Tris-Glycine(pH 7.4), 0.15M NaCl, 40%Glycerol, 0.01% New type preservative N and 0.05% BSA.
<b>Purification</b>	Affinity purification

## Immunogen

<b>Gene Name</b>	
<b>Alternative Names</b>	14 3 3 protein beta; 14 3 3 protein beta/alpha; 14 3 3 protein zeta; 14 3 3 zeta; GW128; HS1; KCIP 1; N-terminally processed; YWHAB; YWHAD; YWHAZ;
<b>Gene ID</b>	
<b>SwissProt ID</b>	P31946/P63104.A synthetic peptide of human 14-3-3

## Application

<b>Dilution Ratio</b>	WB: 1:1000
<b>Molecular Weight</b>	28kDa

**Product Name: 41701(4B11) Rabbit Monoclonal Antibody**  
**Catalog #: AMRe06325**

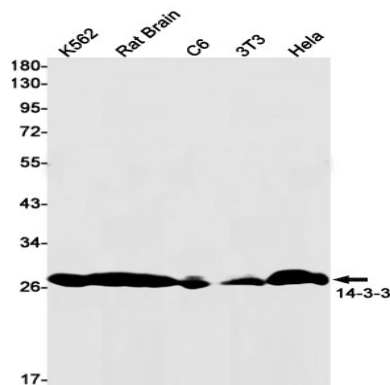
---

## Background

Adapter protein implicated in the regulation of a large spectrum of both general and specialized signaling pathways. Binds to a large number of partners, usually by recognition of a phosphoserine or phosphothreonine motif. Binding generally results in the modulation of the activity of the binding partner. Negative regulator of osteogenesis.

## Research Area

## Image Data



Western blot detection of 41701 in K562,Rat Brain,C6,3T3,HeLa cell lysates using 14-3-3 antibody(1:1000 diluted).

## Note

For research use only.