

**Product Name: Choline Acetyltransferase (18L12) Rabbit
Monoclonal Antibody
Catalog #: AMRe06177**

Summary

Production Name	Choline Acetyltransferase (18L12) Rabbit Monoclonal Antibody
Description	Rabbit Monoclonal Antibody
Host	Rabbit
Application	WB
Reactivity	Human,Mouse,Rat

Performance

Conjugation	Unconjugated
Modification	Acetyl Antibody
Isotype	IgG
Clonality	Monoclonal
Form	Liquid
Storage	Store at 4°C short term. Aliquot and store at -20°C long term. Avoid freeze/thaw cycles.
Buffer	Supplied in 50mM Tris-Glycine(pH 7.4), 0.15M NaCl, 40%Glycerol, 0.01% New type preservative N and 0.05% BSA.
Purification	Affinity purification

Immunogen

Gene Name	
Alternative Names	Acetyl CoA choline O; ChAT; CHOACTase; Choline acetylase; choline acetyltransferase; Choline O acetyltransferase; Choline O-acetyltransferase; CMS1A; CMS1A2;
Gene ID	
SwissProt ID	Q03059(mouse)P32738(Rat)(guinea pig:P13222)(human:P28329).A synthetic peptide of human Choline Acetyltransferase

Application

Dilution Ratio	WB: 1:1000-1:5000
Molecular Weight	72kDa

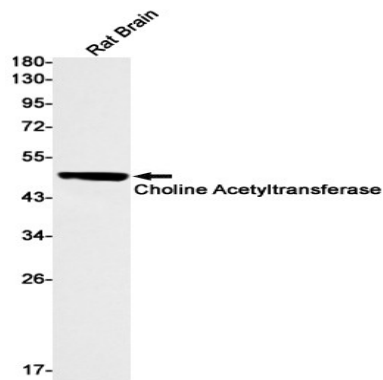
**Product Name: Choline Acetyltransferase (18L12) Rabbit
Monoclonal Antibody
Catalog #: AMRe06177**

Background

Catalyzes the reversible synthesis of acetylcholine (ACh) from acetyl CoA and choline at cholinergic synapses.

Research Area

Image Data



Western blot detection of Choline Acetyltransferase in Rat Brain lysates using Choline Acetyltransferase antibody(1:1000 diluted).

Note

For research use only.