

**Product Name: Phospho-RPA2 (T21) (8Y1) Rabbit
Monoclonal Antibody
Catalog #: AMRe05996**

Summary

Production Name	Phospho-RPA2 (T21) (8Y1) Rabbit Monoclonal Antibody
Description	Rabbit Monoclonal Antibody
Host	Rabbit
Application	WB
Reactivity	Human,Mouse,Rat

Performance

Conjugation	Unconjugated
Modification	Phospho Antibody
Isotype	IgG
Clonality	Monoclonal
Form	Liquid
Storage	Store at 4°C short term. Aliquot and store at -20°C long term. Avoid freeze/thaw cycles.
Buffer	Rabbit IgG in phosphate buffered saline , pH 7.4, 150mM NaCl, 0.02% New type preservative N and 50% glycerol. Store at +4°C short term. Store at -20°C long term. Avoid freeze / thaw cycle.
Purification	Affinity purification

Immunogen

Gene Name	RPA2
Alternative Names	REPA2; RF-A; RP-A; RPA2; RPA32; replication factor-A protein 2; replication protein A 32 kDa subunit; replication protein A2;
Gene ID	6118.0
SwissProt ID	P15927.

Application

Dilution Ratio	WB 1:5000~1:10000
Molecular Weight	29kDa

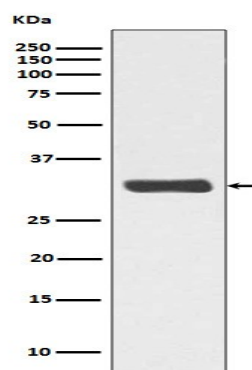
**Product Name: Phospho-RPA2 (T21) (8Y1) Rabbit
Monoclonal Antibody
Catalog #: AMRe05996**

Background

As part of the heterotrimeric replication protein A complex (RPA/RP-A), binds and stabilizes single-stranded DNA intermediates, that form during DNA replication or upon DNA stress. It prevents their reannealing and in parallel, recruits and activates different proteins and complexes involved in DNA metabolism. Thereby, it plays an essential role both in DNA replication and the cellular response to DNA damage. In the cellular response to DNA damage, the RPA complex controls DNA repair and DNA damage checkpoint activation. As part of the heterotrimeric replication protein A complex (RPA/RP-A), binds and stabilizes single-stranded DNA intermediates, that form during DNA replication or upon DNA stress. It prevents their reannealing and in parallel, recruits and activates different proteins and complexes involved in DNA metabolism. Thereby, it plays an essential role both in DNA replication and the cellular response to DNA damage. In the cellular response to DNA damage, the RPA complex controls DNA repair and DNA damage checkpoint activation. Through recruitment of ATRIP activates the ATR kinase a master regulator of the DNA damage response. It is required for the recruitment of the DNA double-strand break repair factors RAD51 and RAD52 to chromatin in response to DNA damage. Also recruits to sites of DNA damage proteins like XPA and XPG that are involved in nucleotide excision repair and is required for this mechanism of DNA repair. Plays also a role in base excision repair (BER) probably through interaction with UNG. Also recruits SMARCAL1/HARP, which is involved in replication fork restart, to sites of DNA damage. May also play a role in telomere maintenance.

Research Area

Image Data



Western blot analysis of Phospho-RPA2 (T21) expression in HeLa cell lysate treated with Calyculin A.

Note

For research use only.

**Product Name: Phospho-RPA2 (T21) (8Y1) Rabbit
Monoclonal Antibody
Catalog #: AMRe05996**

