

**Product Name: Phospho-Raf1 (Ser259) (4T6) Rabbit
Monoclonal Antibody
Catalog #: AMRe05990**



Summary

Production Name	Phospho-Raf1 (Ser259) (4T6) Rabbit Monoclonal Antibody
Description	Rabbit Monoclonal Antibody
Host	Rabbit
Application	WB
Reactivity	Human,Mouse,Rat

Performance

Conjugation	Unconjugated
Modification	Phospho Antibody
Isotype	IgG
Clonality	Monoclonal
Form	Liquid
Storage	Store at 4°C short term. Aliquot and store at -20°C long term. Avoid freeze/thaw cycles.
Buffer	Supplied in 50mM Tris-Glycine(pH 7.4), 0.15M NaCl, 40%Glycerol, 0.01% New type preservative N and 0.05% BSA.
Purification	Affinity purification

Immunogen

Gene Name	RAF1
Alternative Names	
Gene ID	5894.0
SwissProt ID	P04049.A synthetic phosphopeptide corresponding to residues surrounding Ser259 of human Raf1

Application

Dilution Ratio	WB: 1:1000
Molecular Weight	73kDa

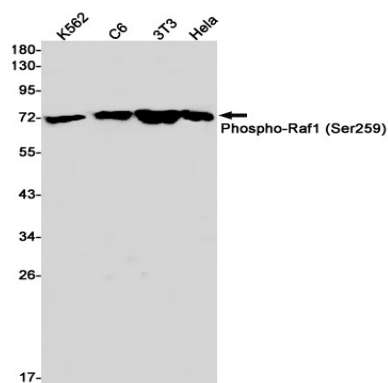
**Product Name: Phospho-Raf1 (Ser259) (4T6) Rabbit
Monoclonal Antibody
Catalog #: AMRe05990**



Background

Research Area

Image Data



Western blot detection of Phospho-Raf1 (Ser259) in K562,C6,3T3,HeLa cell lysates using Phospho-Raf1 (Ser259) antibody(1:1000 diluted).

Note

For research use only.