

Product Name: Phospho-Rac1/Cdc42 (Ser71) (16U12)
Rabbit Monoclonal Antibody
Catalog #: AMRe05988



Summary

Production Name	Phospho-Rac1/Cdc42 (Ser71) (16U12) Rabbit Monoclonal Antibody
Description	Rabbit Monoclonal Antibody
Host	Rabbit
Application	WB,ELISA
Reactivity	Human

Performance

Conjugation	Unconjugated
Modification	Phospho Antibody
Isotype	IgG
Clonality	Monoclonal
Form	Liquid
Storage	Store at 4°C short term. Aliquot and store at -20°C long term. Avoid freeze/thaw cycles.
Buffer	Rabbit IgG in phosphate buffered saline , pH 7.4, 150mM NaCl, 0.02% New type preservative N and 50% glycerol. Store at +4°C short term. Store at -20°C long term. Avoid freeze / thaw cycle.
Purification	Affinity purification

Immunogen

Gene Name	
Alternative Names	CDC42; CDC42Hs; G25K; TKS; MIG5; Ras like protein TC25;
Gene ID	
SwissProt ID	P60953/P63000.

Application

Dilution Ratio	WB 1:500~1:1000
Molecular Weight	24kDa

Product Name: Phospho-Rac1/Cdc42 (Ser71) (16U12)
Rabbit Monoclonal Antibody
Catalog #: AMRe05988

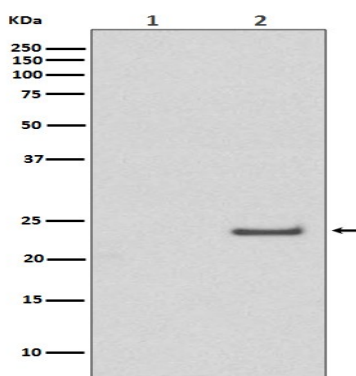


Background

Rac and Cdc42 are members of the Rho-GTPase family. In mammals, Rac exists as three isoforms, Rac1, Rac2 and Rac3, which are highly similar in sequence. Rac1 and Cdc42, the most widely studied of this group, are ubiquitously expressed. Rac2 is expressed in cells of hematopoietic origin, and Rac3, while highly expressed in brain, is also found in many other tissues. Rac and Cdc42 play key signaling roles in cytoskeletal reorganization, membrane trafficking, transcriptional regulation, cell growth and development.

Research Area

Image Data



Western blot analysis of Phospho-Rac1/Cdc42 (Ser71) expression in (1) A431 cell lysate treated with LP; (2) A431 cell lysate.

Note

For research use only.