

**Product Name: Phospho-PDHA1 (S293) (17H17) Rabbit
Monoclonal Antibody
Catalog #: AMRe05965**



Summary

Production Name	Phospho-PDHA1 (S293) (17H17) Rabbit Monoclonal Antibody
Description	Rabbit Monoclonal Antibody
Host	Rabbit
Application	WB,ELISA
Reactivity	Human,Mouse,Rat

Performance

Conjugation	Unconjugated
Modification	Phospho Antibody
Isotype	IgG
Clonality	Monoclonal
Form	Liquid
Storage	Store at 4°C short term. Aliquot and store at -20°C long term. Avoid freeze/thaw cycles.
Buffer	Rabbit IgG in phosphate buffered saline , pH 7.4, 150mM NaCl, 0.02% New type preservative N and 50% glycerol. Store at +4°C short term. Store at -20°C long term. Avoid freeze / thaw cycle.
Purification	Affinity purification

Immunogen

Gene Name	PDHA1
Alternative Names	PDH; PDHA; PDHA1; PDHCE1A; PHE1A; Pyruvate Dehydrogenase (lipoamide) alpha 1; Pyruvate Dehydrogenase E1 alpha;
Gene ID	5160.0
SwissProt ID	P08559.

Application

Dilution Ratio	WB 1:500-1:2000
Molecular Weight	43kDa

**Product Name: Phospho-PDHA1 (S293) (17H17) Rabbit
Monoclonal Antibody
Catalog #: AMRe05965**



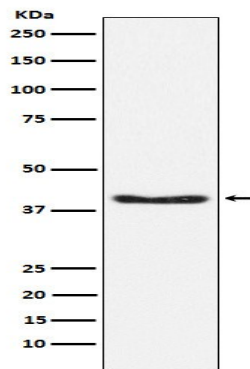
Background

The pyruvate dehydrogenase complex catalyzes the overall conversion of pyruvate to acetyl-CoA and CO₂. It contains multiple copies of three enzymatic components: pyruvate dehydrogenase (E1), dihydrolipoamide acetyltransferase (E2) and lipoamide dehydrogenase (E3).

The pyruvate dehydrogenase complex catalyzes the overall conversion of pyruvate to acetyl-CoA and CO₂, and thereby links the glycolytic pathway to the tricarboxylic cycle.

Research Area

Image Data



Western blot analysis of Phospho-PDHA1 (S293) expression in 293T cell lysate.

Note

For research use only.