

**Product Name: Phospho-Paxillin (Y118) (19J11) Rabbit
Monoclonal Antibody
Catalog #: AMRe05963**



Summary

Production Name	Phospho-Paxillin (Y118) (19J11) Rabbit Monoclonal Antibody
Description	Rabbit Monoclonal Antibody
Host	Rabbit
Application	WB,ELISA
Reactivity	Human,Mouse,Rat

Performance

Conjugation	Unconjugated
Modification	Phospho Antibody
Isotype	IgG
Clonality	Monoclonal
Form	Liquid
Storage	Store at 4°C short term. Aliquot and store at -20°C long term. Avoid freeze/thaw cycles.
Buffer	Rabbit IgG in phosphate buffered saline , pH 7.4, 150mM NaCl, 0.02% New type preservative N and 50% glycerol. Store at +4°C short term. Store at -20°C long term. Avoid freeze / thaw cycle.
Purification	Affinity purification

Immunogen

Gene Name	PXN
Alternative Names	Paired box protein Pax 1; PAX 1; PAX1; Paxillin alpha; Paxillin; PXN; PXN protein;
Gene ID	5829.0
SwissProt ID	P49023.

Application

Dilution Ratio	WB 1:1000~1:2000
Molecular Weight	65kDa

**Product Name: Phospho-Paxillin (Y118) (19J11) Rabbit
Monoclonal Antibody
Catalog #: AMRe05963**

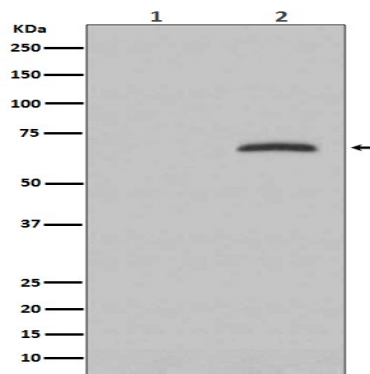


Background

Cytoskeletal protein involved in actin-membrane attachment at sites of cell adhesion to the extracellular matrix (focal adhesion). Cytoskeletal protein involved in actin-membrane attachment at sites of cell adhesion to the extracellular matrix (focal adhesion).

Research Area

Image Data



Western blot analysis of Phospho-Paxillin (Y118) expression in (1) HeLa cell lysate; (2) HeLa cell treated with pervanadate.

Note

For research use only.