

**Product Name: Phospho-Histone H3 (Ser10/Thr11)  
(17B15) Rabbit Monoclonal Antibody**  
**Catalog #: AMRe05918**

---

## Summary

<b>Production Name</b>	Phospho-Histone H3 (Ser10/Thr11) (17B15) Rabbit Monoclonal Antibody
<b>Description</b>	Rabbit Monoclonal Antibody
<b>Host</b>	Rabbit
<b>Application</b>	WB
<b>Reactivity</b>	Human,Mouse,Rat

## Performance

<b>Conjugation</b>	Unconjugated
<b>Modification</b>	Phospho Antibody
<b>Isotype</b>	IgG
<b>Clonality</b>	Monoclonal
<b>Form</b>	Liquid
<b>Storage</b>	Store at 4°C short term. Aliquot and store at -20°C long term. Avoid freeze/thaw cycles.
<b>Buffer</b>	Supplied in 50mM Tris-Glycine(pH 7.4), 0.15M NaCl, 40%Glycerol, 0.01% New type preservative N and 0.05% BSA.
<b>Purification</b>	Affinity purification

## Immunogen

<b>Gene Name</b>	H3C1
<b>Alternative Names</b>	
<b>Gene ID</b>	8350.0
<b>SwissProt ID</b>	P68431.A synthetic phosphopeptide corresponding to residues surrounding Ser10/Thr11 of human Histone H3

## Application

<b>Dilution Ratio</b>	WB: 1:1000
<b>Molecular Weight</b>	15kDa

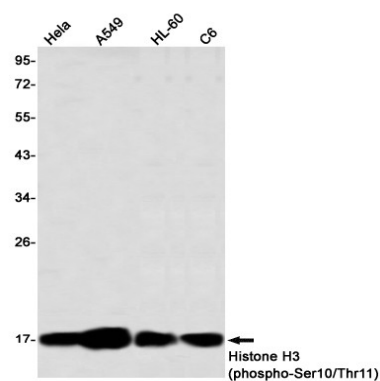
**Product Name: Phospho-Histone H3 (Ser10/Thr11)  
(17B15) Rabbit Monoclonal Antibody  
Catalog #: AMRe05918**

---

## Background

## Research Area

## Image Data



Western blot detection of Histone H3 (phospho-Ser10/Thr11) in HeLa,A549,HL-60,C6 using Histone H3 (phospho-Ser10/Thr11) antibody(1:1000 diluted)

## Note

For research use only.