

**Product Name: Phospho-BCAR1 (Y410) (17X7) Rabbit
Monoclonal Antibody
Catalog #: AMRe05859**



Summary

Production Name	Phospho-BCAR1 (Y410) (17X7) Rabbit Monoclonal Antibody
Description	Rabbit Monoclonal Antibody
Host	Rabbit
Application	WB,ELISA
Reactivity	Human

Performance

Conjugation	Unconjugated
Modification	Phospho Antibody
Isotype	IgG
Clonality	Monoclonal
Form	Liquid
Storage	Store at 4°C short term. Aliquot and store at -20°C long term. Avoid freeze/thaw cycles.
Buffer	Rabbit IgG in phosphate buffered saline , pH 7.4, 150mM NaCl, 0.02% New type preservative N and 50% glycerol. Store at +4°C short term. Store at -20°C long term. Avoid freeze / thaw cycle.
Purification	Affinity purification

Immunogen

Gene Name	BCAR1
Alternative Names	BCAR 1; Bcar1; Breast cancer anti estrogen resistance 1 Breast cancer anti-estrogen resistance protein 1; CAS; Cas scaffolding protein family member 1; CAS1; Cass1; Crk associated substrate; Crk associated substrate p130Cas; CRK-associated substrate; CRKAS; p130cas;
Gene ID	9564.0
SwissProt ID	P56945.

Application

Dilution Ratio	WB 1:500-1:2000
-----------------------	-----------------

**Product Name: Phospho-BCAR1 (Y410) (17X7) Rabbit
Monoclonal Antibody
Catalog #: AMRe05859**



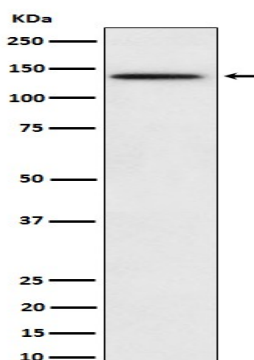
Molecular Weight 93kDa

Background

Docking protein which plays a central coordinating role for tyrosine kinase-based signaling related to cell adhesion. Implicated in induction of cell migration. Overexpression confers antiestrogen resistance on breast cancer cells. Docking protein which plays a central coordinating role for tyrosine kinase-based signaling related to cell adhesion (PubMed:12832404, PubMed:12432078). Implicated in induction of cell migration and cell branching (PubMed:12432078, PubMed:12832404, PubMed:17038317). Involved in the BCAR3-mediated inhibition of TGFB signaling (By similarity).

Research Area

Image Data



Western blot analysis of Phospho-BCAR1 (Y410) expression in HeLa treated with pervanadate cell lysate.

Note

For research use only.