

**Product Name: Lysophospholipase 1 (18C9) Rabbit
Monoclonal Antibody
Catalog #: AMRe04965**



Summary

Production Name	Lysophospholipase 1 (18C9) Rabbit Monoclonal Antibody
Description	Rabbit Monoclonal Antibody
Host	Rabbit
Application	WB
Reactivity	Human,Mouse,Rat

Performance

Conjugation	Unconjugated
Modification	Phospho Antibody
Isotype	IgG
Clonality	Monoclonal
Form	Liquid
Storage	Store at 4°C short term. Aliquot and store at -20°C long term. Avoid freeze/thaw cycles.
Buffer	Rabbit IgG in phosphate buffered saline , pH 7.4, 150mM NaCl, 0.02% New type preservative N and 50% glycerol. Store at +4°C short term. Store at -20°C long term. Avoid freeze / thaw cycle.
Purification	Affinity purification

Immunogen

Gene Name	LYPLA1
Alternative Names	APT1; hAPT1; LPL1; LYPLA1; Lysophospholipase 1; LYSOPLA; LysoPLA I;
Gene ID	10434.0
SwissProt ID	O75608.

Application

Dilution Ratio	WB 1:500-1:2000
Molecular Weight	25kDa

**Product Name: Lysophospholipase 1 (18C9) Rabbit
Monoclonal Antibody
Catalog #: AMRe04965**

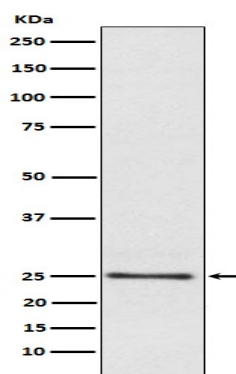


Background

Hydrolyzes fatty acids from S-acylated cysteine residues in proteins such as trimeric G alpha proteins or HRAS. Has depalmitoylating activity and also low lysophospholipase activity. Acts as a acyl-protein thioesterase (PubMed:19439193, PubMed:20418879). Hydrolyzes fatty acids from S-acylated cysteine residues in proteins such as trimeric G alpha proteins or HRAS (PubMed:20418879). Has depalmitoylating activity toward KCNMA1 (PubMed:22399288). Could also depalmitoylate ADRB2 (PubMed:27481942). Acts as a lysophospholipase and hydrolyzes lysophosphatidylcholine (lyso-PC) (PubMed:19439193). Also hydrolyzes lysophosphatidylethanolamine (lyso-PE), lysophosphatidylinositol (lyso- PI) and lysophosphatidylserine (lyso-PS) (By similarity). Has much higher thioesterase activity than lysophospholipase activity (PubMed:19439193). Contributes to the production of lysophosphatidic acid (LPA) during blood coagulation by recognizing and cleaving plasma phospholipids to generate lysophospholipids which in turn act as substrates for ENPP2 to produce LPA (PubMed:21393252).

Research Area

Image Data



Western blot analysis of Lysophospholipase 1 expression in Human fetal liver lysate.

Note

For research use only.

**Product Name: Lysophospholipase 1 (18C9) Rabbit
Monoclonal Antibody
Catalog #: AMRe04965**

