
Summary

Production Name	Cyclin B1 Rabbit Monoclonal Antibody
Description	Recombinant Rabbit Monoclonal antibody
Host	Rabbit
Application	WB,ICC/IF
Reactivity	Human

Performance

Conjugation	Unconjugated
Modification	Unmodified
Isotype	IgG
Clonality	Monoclonal Antibody
Form	Liquid
Storage	Store at 4°C short term. Aliquot and store at -20°C long term. Avoid freeze/thaw cycles.
Buffer	50mM Tris-Glycine(pH 7.4), 0.15M NaCl, 40% Glycerol, 0.01% Sodium azide and 0.05% BSA
Purification	Affinity Purified

Immunogen

Gene Name	Ccnb1
Alternative Names	CCNB1; CCNB; G2/mitotic-specific cyclin-B1
Gene ID	268697.0
SwissProt ID	P24860

Application

Dilution Ratio	WB: 1/500-1/1000 IF: 1/50-1/200
Molecular Weight	Calculated MW: 48 kDa; Observed MW: 55 kDa

Background

Product Name: Cyclin B1 Rabbit Monoclonal Antibody
Catalog #: AMRe04139

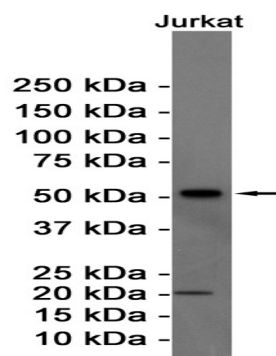


Essential for the control of the cell cycle at the G2/M (mitosis) transition.

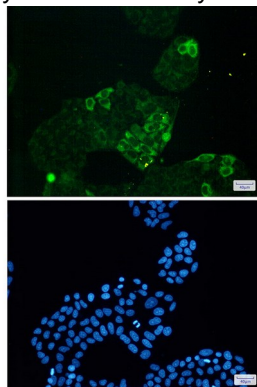
Research Area

Cell Biology

Image Data



Western blot analysis of Cyclin B1 in Jurkat lysates using Cyclin B1 antibody.



Immunocytochemistry analysis of Cyclin B1(green) in HeLa using Cyclin B1 antibody,and DAPI(blue)

Note

For research use only.