

**Product Name: Phospho-PKC alpha (Thr638) Rabbit
Monoclonal Antibody
Catalog #: AMRe04138**



Summary

Production Name	Phospho-PKC alpha (Thr638) Rabbit Monoclonal Antibody
Description	Recombinant Rabbit Monoclonal antibody
Host	Rabbit
Application	WB,IHC-P,IP
Reactivity	Human,Mouse,Rat

Performance

Conjugation	Unconjugated
Modification	Phosphorylated
Isotype	IgG
Clonality	Monoclonal Antibody
Form	Liquid
Storage	Store at 4°C short term. Aliquot and store at -20°C long term. Avoid freeze/thaw cycles.
Buffer	50mM Tris-Glycine(pH 7.4), 0.15M NaCl, 40% Glycerol, 0.01% Sodium azide and 0.05% BSA
Purification	Affinity Purified

Immunogen

Gene Name	PRKCA
Alternative Names	PRKCA; PKCA; PRKACA; Protein kinase C alpha type; PKC-A; PKC-alpha
Gene ID	5578
SwissProt ID	P17252

Application

Dilution Ratio	WB: 1/500-1/1000 IHC: 1/50-1/100 IP: 1/20
Molecular Weight	Calculated MW: 77 kDa; Observed MW: 80 kDa

Product Name: Phospho-PKC alpha (Thr638) Rabbit Monoclonal Antibody
Catalog #: AMRe04138



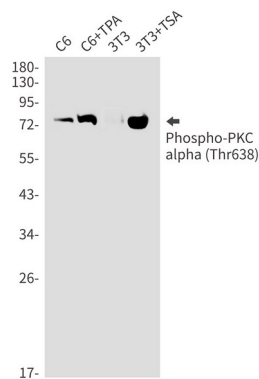
Background

PKC alpha is an AGC kinase of the PKC family. A classical PKC downstream of many mitogenic and receptors. Classical PKCs are calcium-dependent enzymes that are activated by phosphatidylserine, diacylglycerol and phorbol esters.

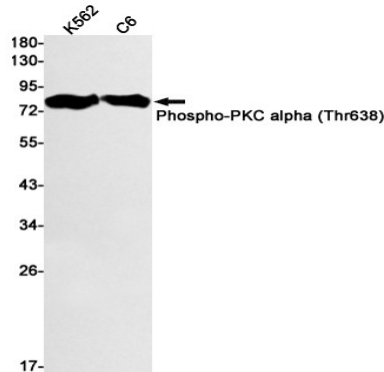
Research Area

Signal Transduction

Image Data

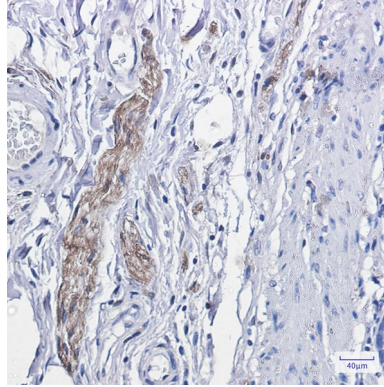


Western blot analysis of Phospho-PKC alpha (Thr638) in C6, C6+TPA, 3T3, 3T3+TSA lysates using Phospho-PKC alpha (Thr638) antibody.



Western blot analysis of Phospho-PKC alpha (Thr638) in K562, C6 lysates using Phospho-PKC alpha (Thr638) antibody.

**Product Name: Phospho-PKC alpha (Thr638) Rabbit
Monoclonal Antibody
Catalog #: AMRe04138**



Immunohistochemistry analysis of paraffin-embedded Human colon cancer using Phospho-PKC alpha (Thr638) antibody.
High-pressure and temperature Sodium Citrate pH 6.0 was used for antigen retrieval.

Note

For research use only.