

Summary

Production Name	EGFR Rabbit Monoclonal Antibody
Description	Recombinant Rabbit Monoclonal antibody
Host	Rabbit
Application	WB,ICC/IF,IP
Reactivity	Human,Mouse

Performance

Conjugation	Unconjugated
Modification	Unmodified
Isotype	IgG
Clonality	Monoclonal Antibody
Form	Liquid
Storage	Store at 4°C short term. Aliquot and store at -20°C long term. Avoid freeze/thaw cycles.
Buffer	50mM Tris-Glycine(pH 7.4), 0.15M NaCl, 40% Glycerol, 0.01% Sodium azide and 0.05% BSA
Purification	Affinity Purified

Immunogen

Gene Name	EGFR
Alternative Names	EGFR; ERBB; ERBB1; HER1; Epidermal growth factor receptor; Proto-oncogene c-ErbB-1; Receptor tyrosine-protein kinase erbB-1
Gene ID	1956
SwissProt ID	P00533

Application

Dilution Ratio	WB: 1/500-1/1000 IF: 1/50-1/200 IP: 1/20
Molecular Weight	Calculated MW: 134 kDa; Observed MW: 175 kDa

Product Name: EGFR Rabbit Monoclonal Antibody
Catalog #: AMRe04137



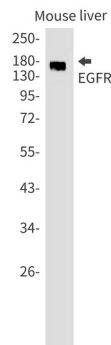
Background

EGFR is a receptor tyrosine kinase. Receptor for epidermal growth factor (EGF) and related growth factors including TGF-alpha, amphiregulin, betacellulin, heparin-binding EGF-like growth factor, GP30 and vaccinia virus growth factor. Is involved in the control of cell growth and differentiation. . A single-pass transmembrane tyrosine kinase. Ligand binding to this receptor results in receptor dimerization, autophosphorylation (in trans), activation of various downstream signaling molecules and lysosomal degradation.

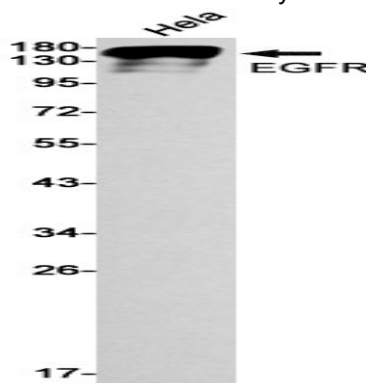
Research Area

Signal Transduction

Image Data

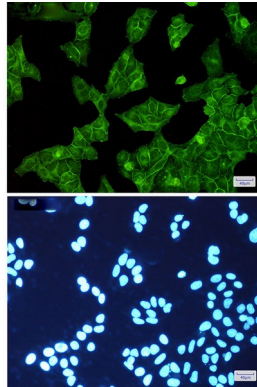


Western blot analysis of EGFR in mouse liver lysates using EGFR antibody.



Western blot analysis of EGFR in HeLa lysates using EGFR antibody.

Product Name: EGFR Rabbit Monoclonal Antibody
Catalog #: AMRe04137



Immunocytochemistry analysis of EGFR(green) in HeLa using EGFR antibody, and DAPI(blue)

Note

For research use only.